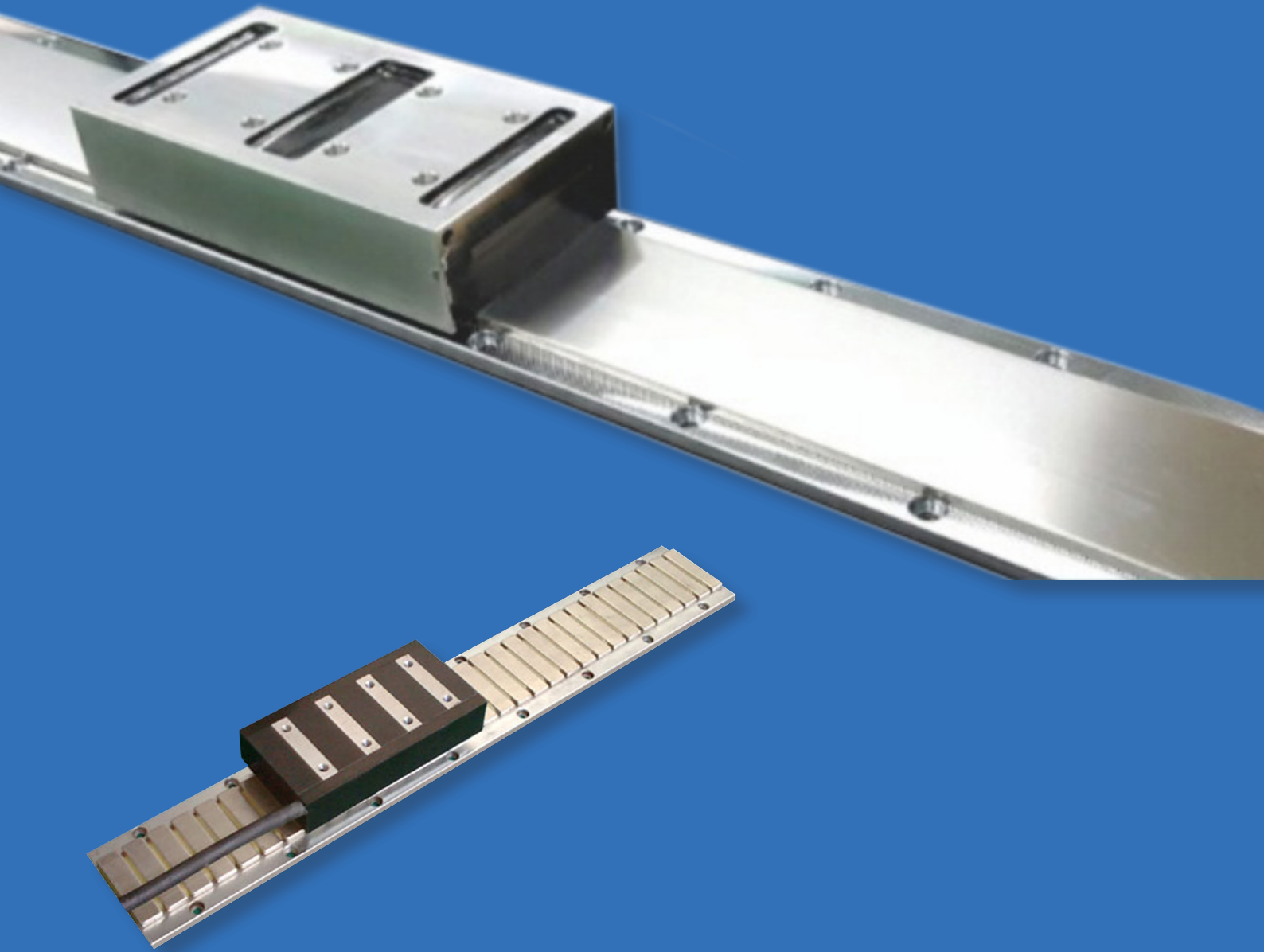


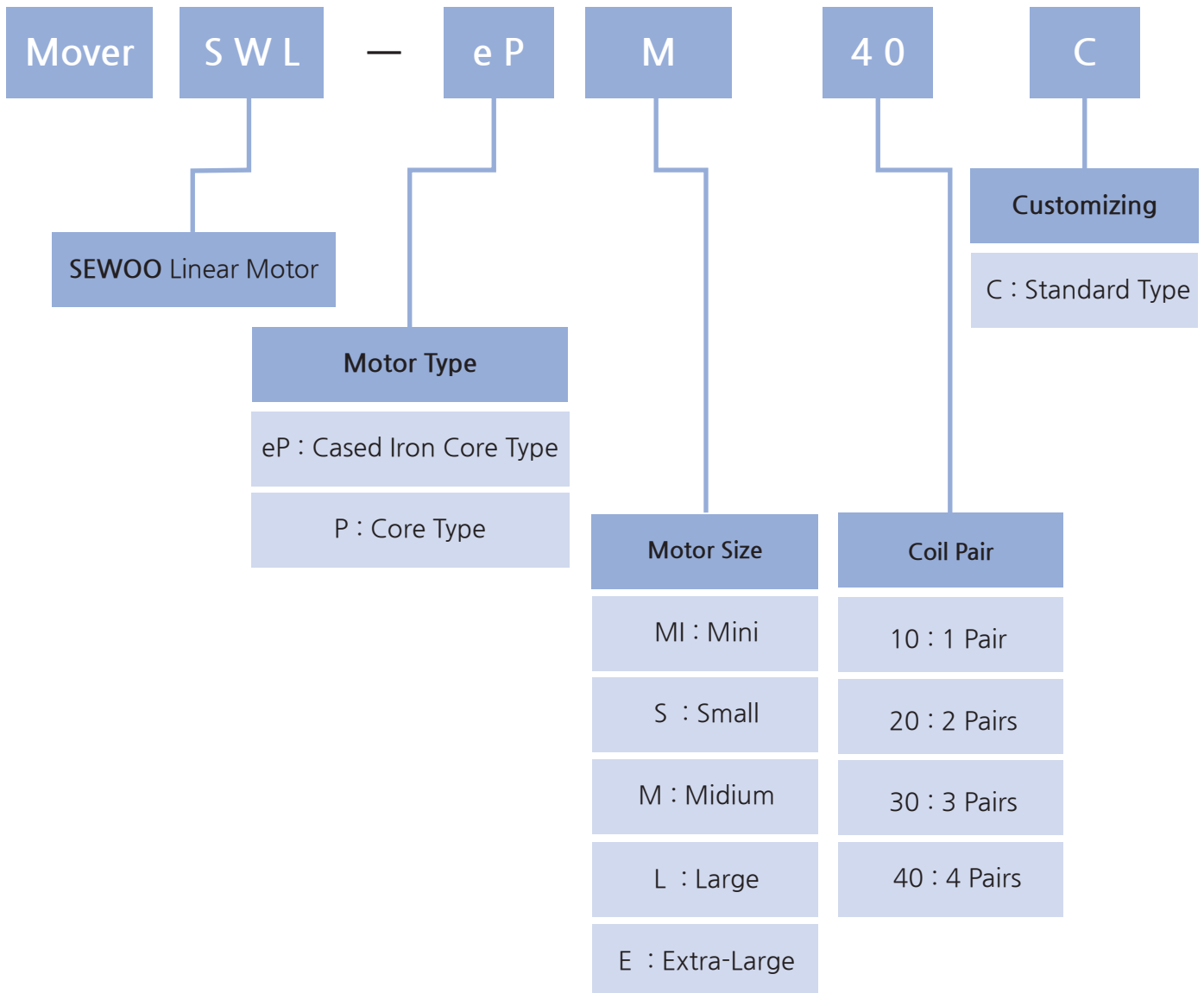
LINEAR MOTOR SERIES



IRONCORE TYPE

MOTOR IS COMPOSED OF A MOVER (COIL ASSEMBLY)
AND A STATOR (MAGNET ARRAY)

LINEAR MOTOR CODING SYSTEM

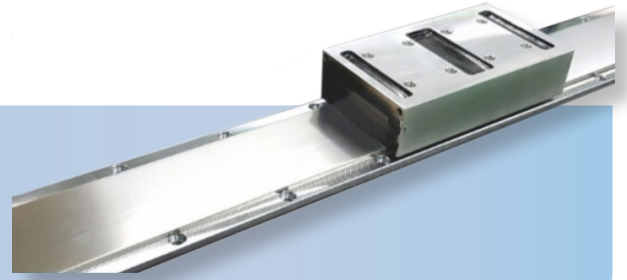


MOTOR	Continuous Force	MOTOR	Continuous Force
ePMI10~40C	20~80N	PMI10~40C	18~75N
ePS10~40C	55~215N	PS10~40C	42~166N
ePM10~40C	80~315N	PM10~40C	78~315N
ePL20~40C	360~700N	PL10~40C	162~639N
ePE20~40C	770~1500N	PE10~40C	401~1638N

IronCore Linear Motor

BASIC SPECIFICATIONS

- ◆ Rating Condition : Continuous
- ◆ Voltage Endurance : AC1500V, 1Min
- ◆ Operating Temperature : 0~40°C
- ◆ Coil Insulation Class : F Class(155°C)
- ◆ Hall Effect Device : Optional
- ◆ Power Supply Requirement : Trapezoidal or Sinusoidal 3-phase Brushless Amplifier



Performance Specifications

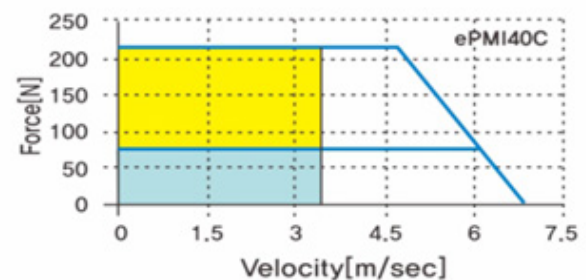
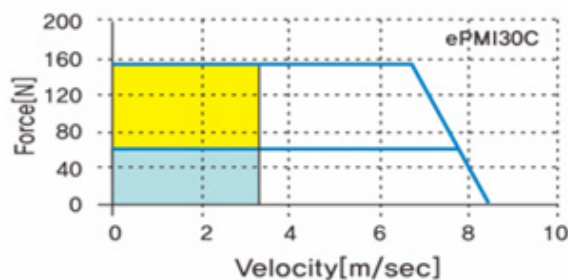
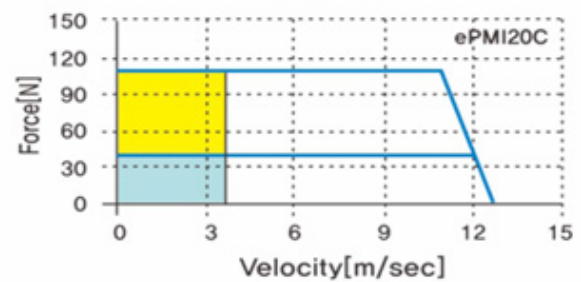
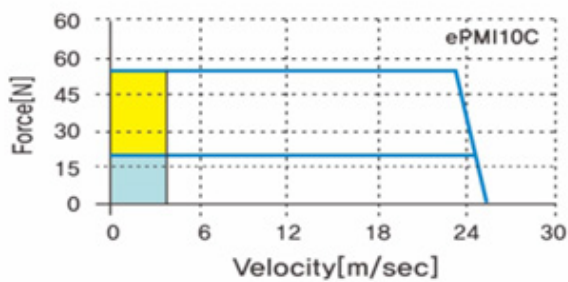
		Unit	SWL-ePMI10C	SWL-ePMI20C	SWL-ePMI30C	SWL-ePMI40C
Continuous	Force	N	20	40	60	80
	Current	Arms	1.5	1.5	1.5	1.5
Max.	Force	N	55	105	155	205
	Current	Arms	4.5	4.5	4.5	4.5
Force Constant(kf)		N/Arms	15	29	44.1	56.8
Back EMF Constant(Ke)		Vrms/(m/sec)	5	9.7	14.7	18.9
Electrical Time Constant(Te)		msec	1.99	2.13	2.15	2.19
Resistance(L to L)		Ω	4.64	9.16	13.75	18.38
Inductance(L to L)		mH	9.24	19.53	29.5	40.2
Attraction Force		N	70	135	205	270
Mover Weight		kg	0.2	0.4	0.6	0.7

© Magnet Pole Pitch(N-N) : 18mm, Stator Weight : 1.7kg/m

FORCE VS. VELOCITY CHARACTERISTICS

반복 사용 영역 (Intermittent duty zone)

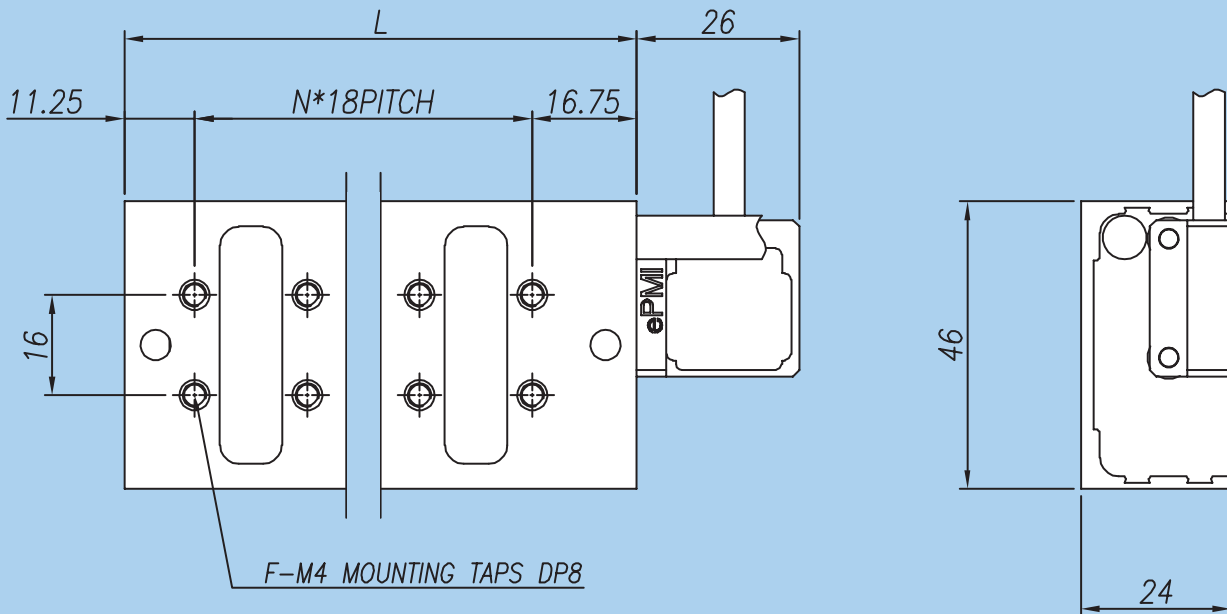
연속 사용 영역 (Continuous duty zone)



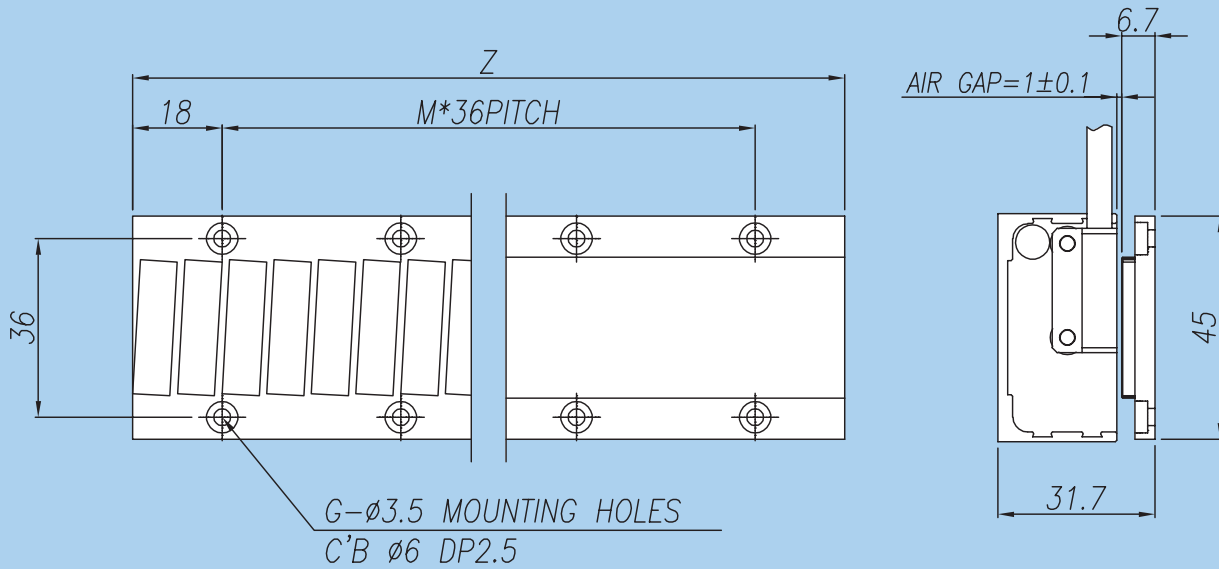
MECHANICAL DIMENSIONS

Mover Dimensions

Unit : mm



Stator Dimensions



● Mover

Model SWL-ePMI	L	N	F
10C	46	1	4
20C	82	3	8
30C	118	5	12
40C	154	7	16

● Stator

Model SWL-ePMI	Z	M	G
108	108	2	6
144	144	3	8
180	180	4	10
252	252	6	14
360	360	9	20

◆ Check the page 60 for cable and connector types

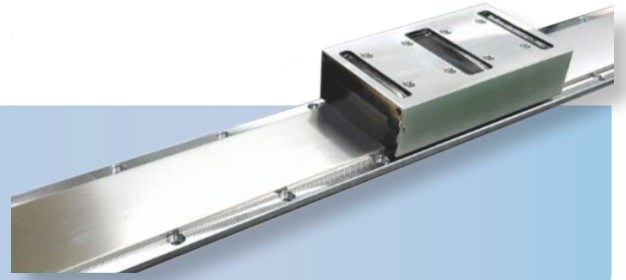


The specifications above are subject to change for enhancement of product performance, Without any prior notice.

IronCore Linear Motor

BASIC SPECIFICATIONS

- ◆ Rating Condition : Continuous
- ◆ Voltage Endurance : AC1500V, 1Min
- ◆ Operating Temperature : 0~40°C
- ◆ Coil Insulation Class : F Class(155°C)
- ◆ Hall Effect Device : Optional
- ◆ Power Supply Requirement : Trapezoidal or Sinusoidal 3-phase Brushless Amplifier



Performance Specifications

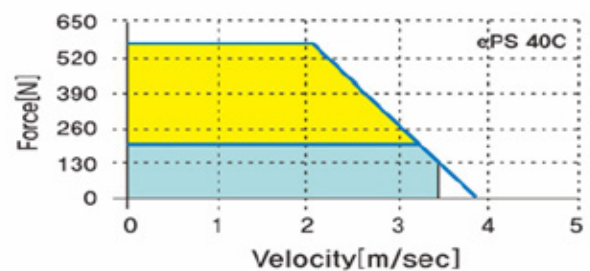
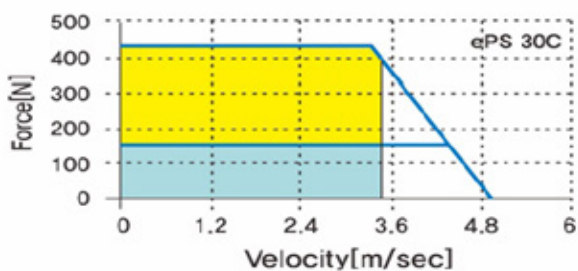
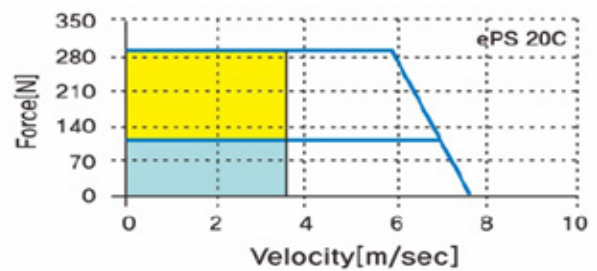
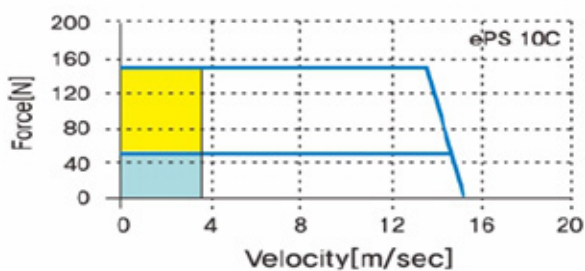
		Unit	SWL-ePS10C	SWL-ePS20C	SWL-ePS30C	SWL-ePS40C
Continuous	Force	N	55	110	160	215
	Current	Arms	2.3	2.3	2.3	2.3
Max.	Force	N	150	295	440	580
	Current	Arms	6.9	6.9	6.9	6.9
Force Constant(kf)		N/Arms	24.8	49.8	75.2	97.3
Back EMF Constant(Ke)		Vrms/(m/sec)	8.3	16.6	25.1	32.4
Electrical Time Constant(Te)		msec	3.44	3.44	3.04	3.56
Resistance(L to L)		Ω	4.37	8.81	13.02	17.34
Inductance(L to L)		mH	15.05	30.33	39.57	61.7
Attraction Force		N	200	400	610	810
Mover Weight		kg	0.5	0.9	1.2	1.6

◎ Magnet Pole Pitch(N-N) : 30mm, Stator Weight : 2.6kg/m

FORCE VS. VELOCITY CHARACTERISTICS

반복 사용 영역 (Intermittent duty zone)

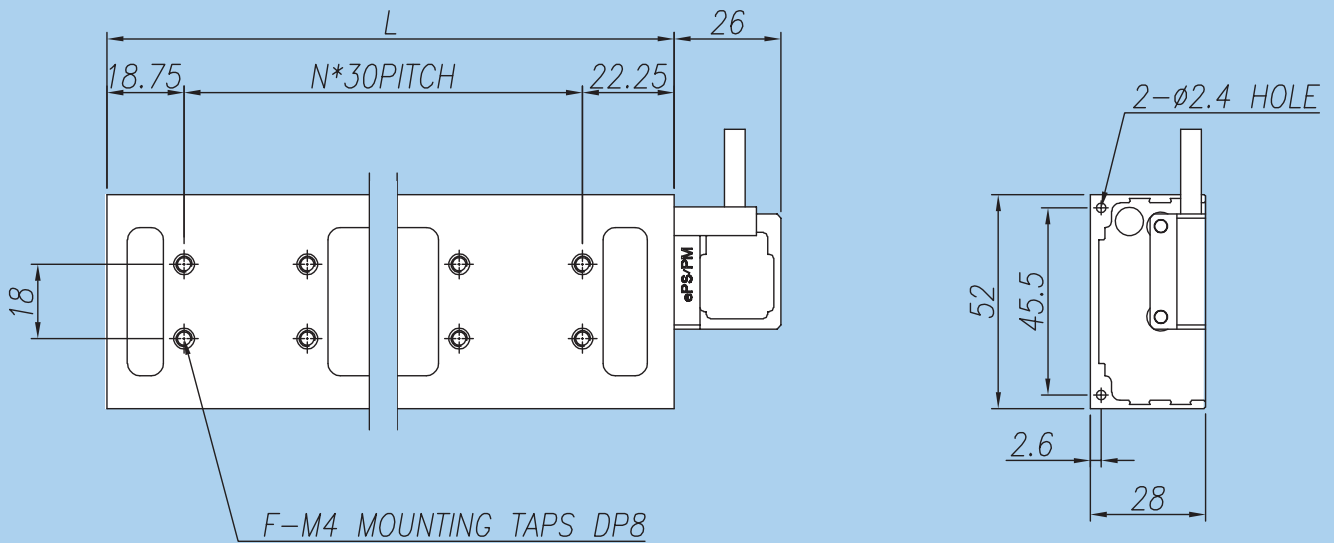
연속 사용 영역 (Continuous duty zone)



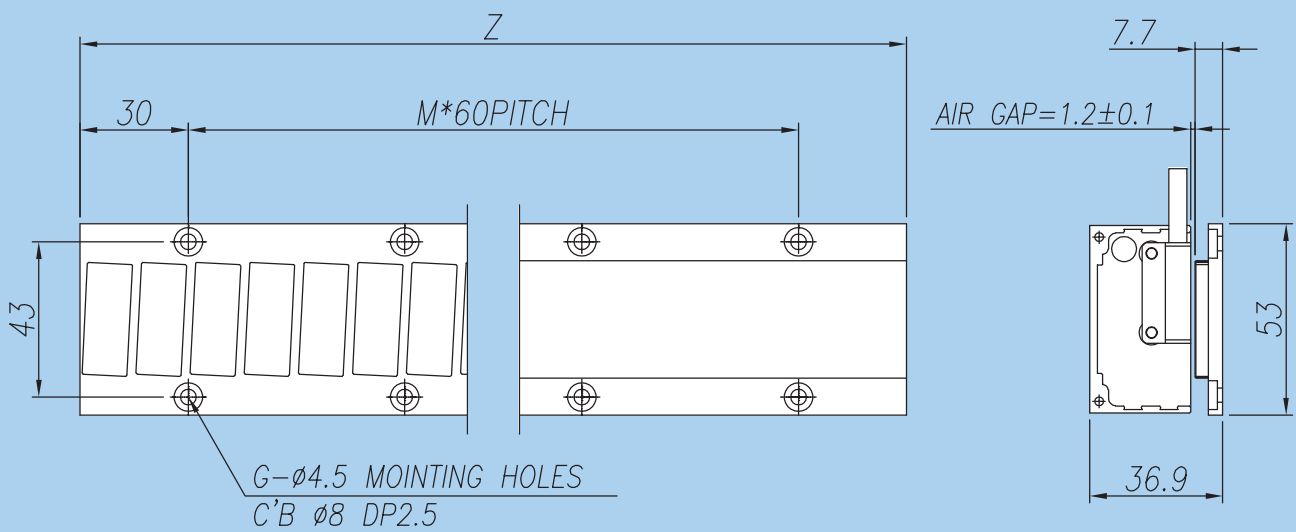
MECHANICAL DIMENSIONS

Mover Dimensions

Unit : mm



Stator Dimensions



● Mover

Model SWL-ePS	L	N	F
10C	71	1	4
20C	131	3	8
30C	191	5	12
40C	251	7	16

◆ Check the page 60 for cable and connector types

● Stator

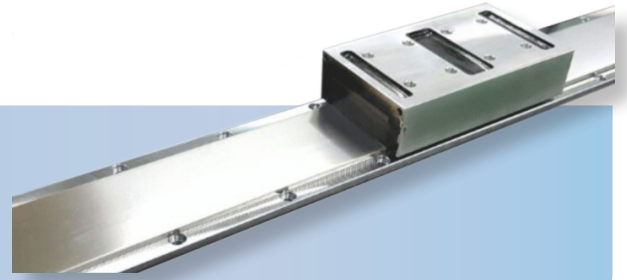
Model SWL-ePS	Z	M	G
180	180	2	6
240	240	3	8
300	300	4	10
420	420	6	14
480	480	7	16

●●●●●▶ The specifications above are subject to change for enhancement of product performance, Without any prior notice.

IronCore Linear Motor

BASIC SPECIFICATIONS

- ◆ Rating Condition : Continuous
- ◆ Voltage Endurance : AC1500V, 1Min
- ◆ Operating Temperature : 0~40°C
- ◆ Coil Insulation Class : F Class(155°C)
- ◆ Hall Effect Device : Optional
- ◆ Power Supply Requirement : Trapezoidal or Sinusoidal 3-phase Brushless Amplifier



Performance Specifications

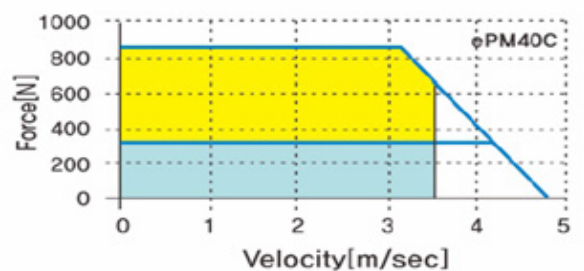
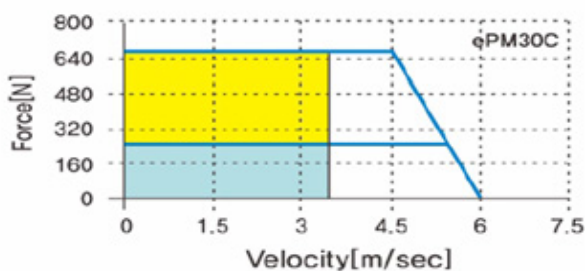
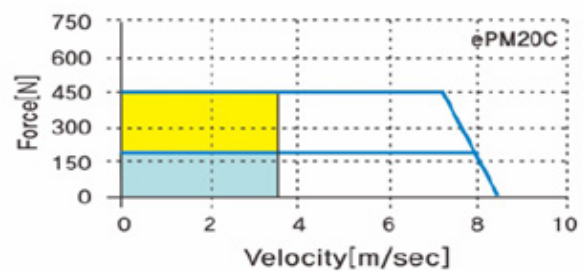
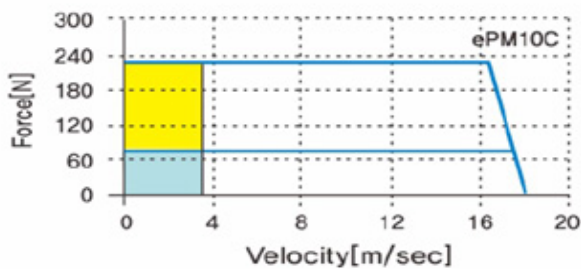
		Unit	SWL-ePM10C	SWL-ePM20C	SWL-ePM30C	SWL-ePM40C
Continuous	Force	N	80	155	235	315
	Current	Arms	3.8	3.8	3.8	3.8
Max.	Force	N	230	445	675	885
	Current	Arms	11.4	11.4	11.4	11.4
Force Constant(kf)		N/Arms	21.2	43.5	63	79.3
Back EMF Constant(Ke)		Vrms/(m/sec)	7	14.5	21	26.4
Electrical Time Constant(Te)		msec	3.32	3.72	3.74	3.84
Resistance(L to L)		Ω	1.85	3.51	5.31	6.92
Inductance(L to L)		mH	6.14	13.04	19.84	26.56
Attraction Force		N	360	710	1070	1430
Mover Weight		kg	0.7	1.3	1.9	2.5

◎ Magnet Pole Pitch(N-N) : 30mm, Stator Weight : 4kg/m

FORCE VS. VELOCITY CHARACTERISTICS

반복 사용 영역 (Intermittent duty zone)

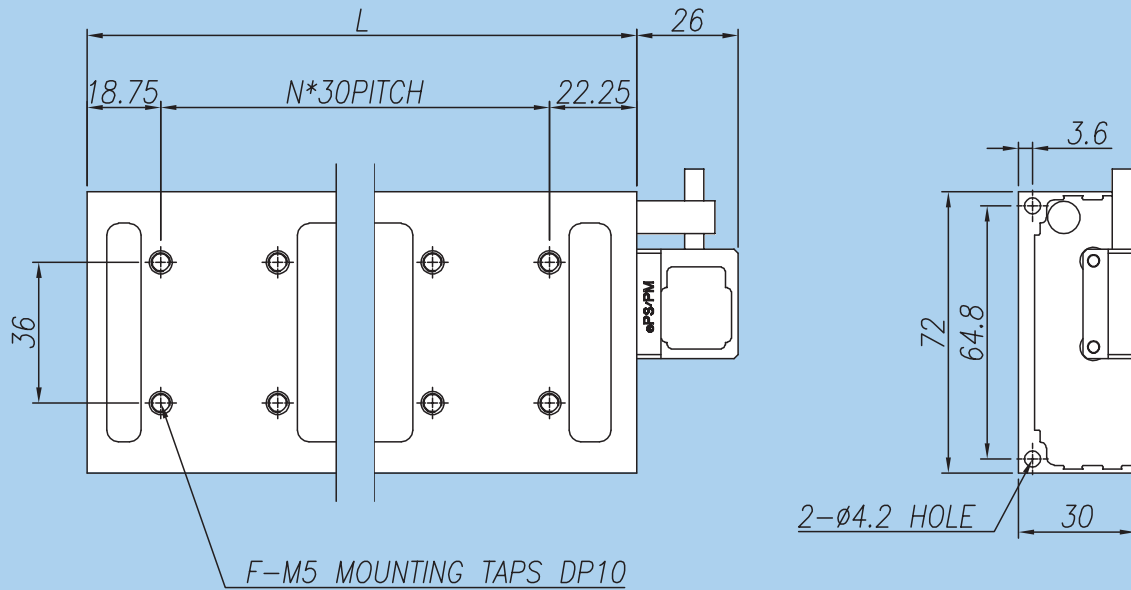
연속 사용 영역 (Continuous duty zone)



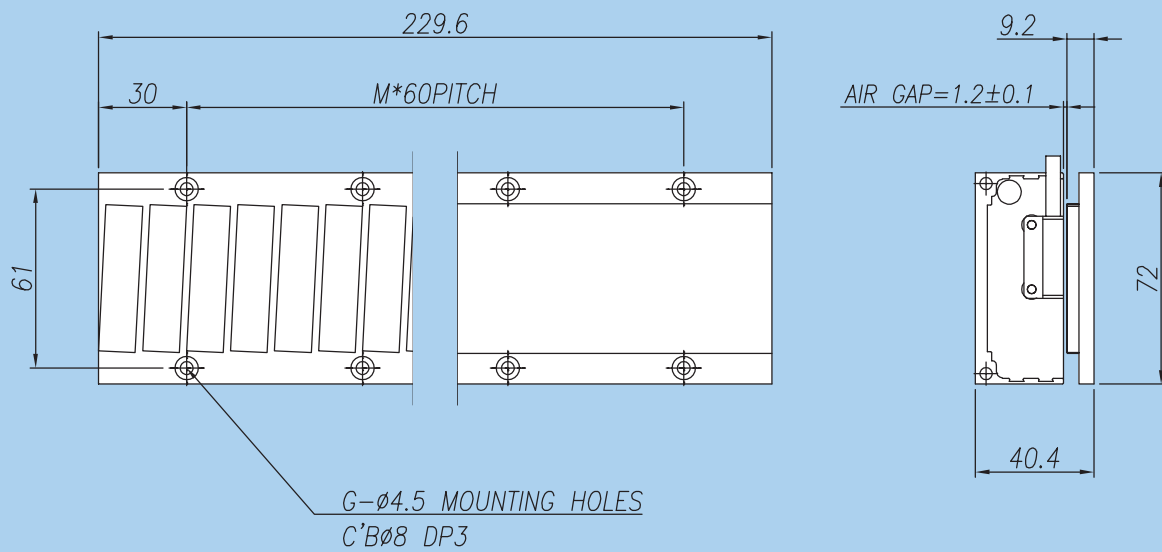
MECHANICAL DIMENSIONS

Mover Dimensions

Unit : mm



Stator Dimensions



● Mover

Model SWL-ePM	L	N	F
10C	71	1	4
20C	131	3	8
30C	191	5	12
40C	251	7	16

● Stator

Model SWL-ePM	Z	M	G
180	180	2	6
240	240	3	8
420	420	6	14
540	540	8	18
600	600	9	20

◆ Check the page 60 for cable and connector types

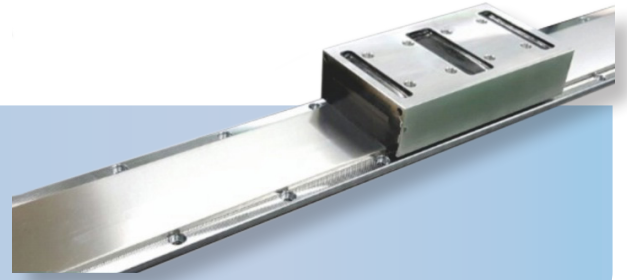


The specifications above are subject to change for enhancement of product performance, Without any prior notice.

IronCore Linear Motor

BASIC SPECIFICATIONS

- ◆ Rating Condition : Continuous
- ◆ Voltage Endurance : AC1500V, 1Min
- ◆ Operating Temperature : 0~40°C
- ◆ Coil Insulation Class : F Class(155°C)
- ◆ Hall Effect Device : Optional
- ◆ Power Supply Requirement : Trapezoidal or Sinusoidal 3-phase Brushless Amplifier



Performance Specifications

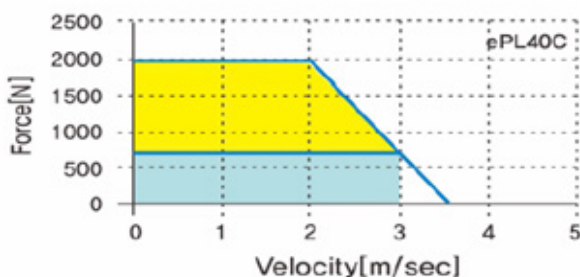
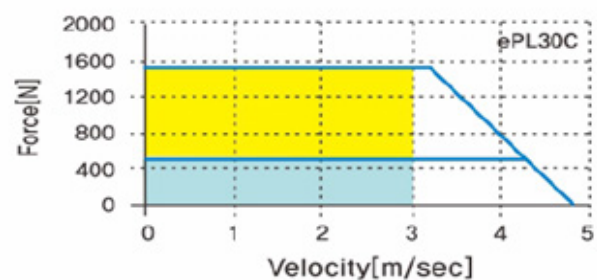
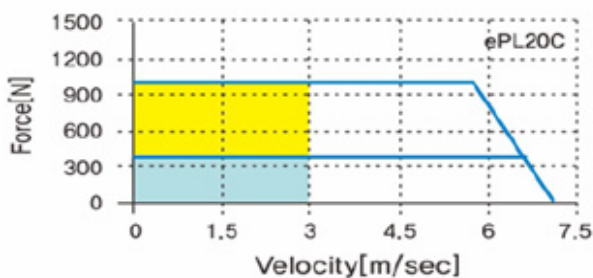
		Unit	SWL-ePL20C	SWL-ePL30C	SWL-ePL40C
Continuous	Force	N	360	530	700
	Current	Arms	6.7	6.7	6.7
Max.	Force	N	1015	1500	2000
	Current	Arms	20.1	20.1	20.1
Force Constant(kf)		N/Arms	54.3	79.5	105.7
Back EMF Constant(Ke)		Vrms/(m/sec)	18.1	26.5	35
Electrical Time Constant(Te)		msec	5.08	5.44	5.57
Resistance(L to L)		Ω	2.77	3.94	5.2
Inductance(L to L)		mH	14.07	21.43	28.94
Attraction Force		N	1430	2140	2850
Mover Weight		kg	4.7	6.9	9.1

© Magnet Pole Pitch(N-N) : 60mm, Stator Weight : 7kg/m

FORCE VS. VELOCITY CHARACTERISTICS

반복 사용 영역 (Intermittent duty zone)

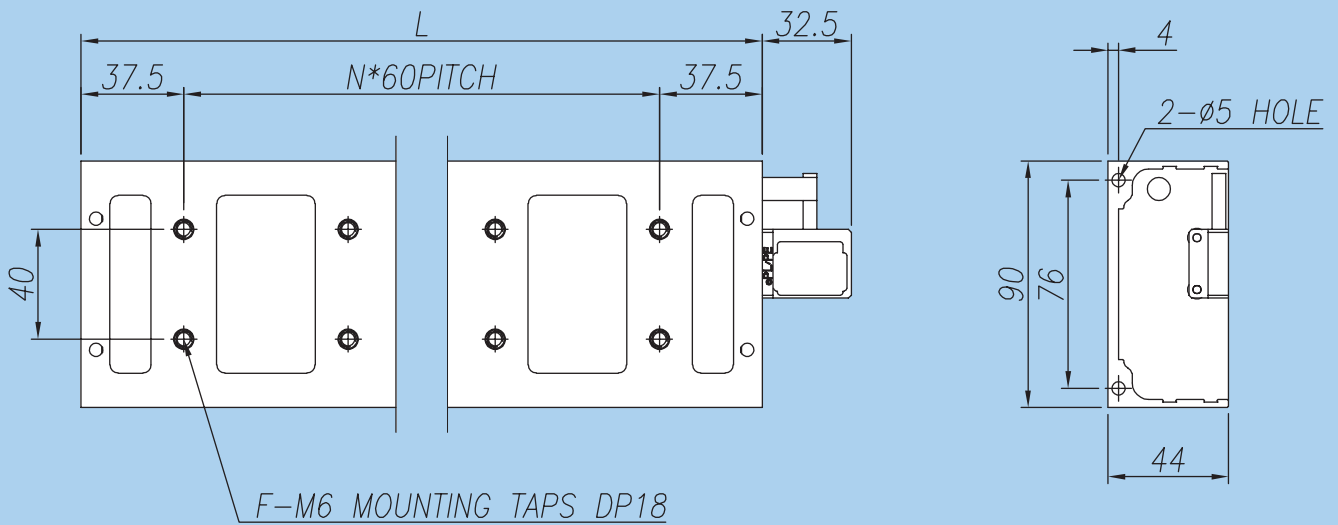
연속 사용 영역 (Continuous duty zone)



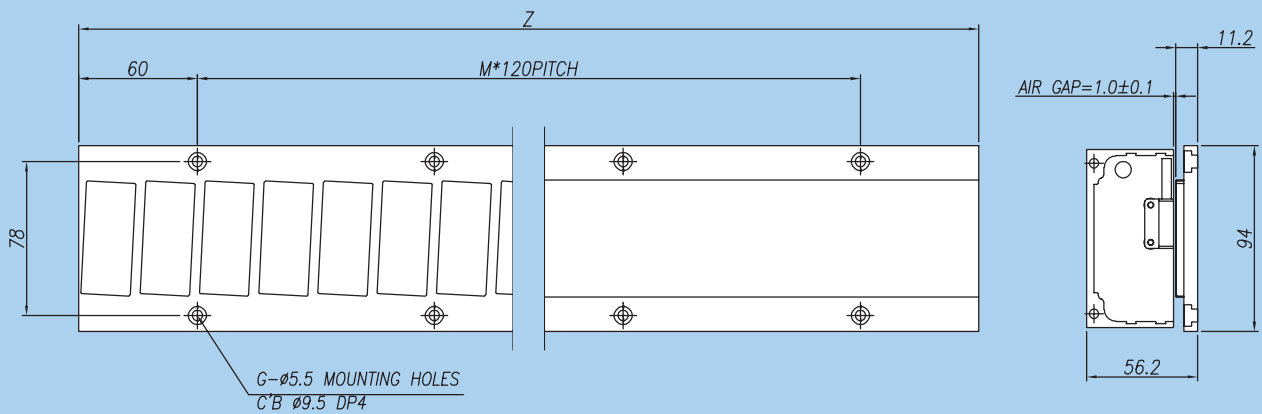
MECHANICAL DIMENSIONS

Mover Dimensions

Unit : mm



Stator Dimensions



● Mover

Model SWL-ePL	L	N	F
20C	255	3	8
30C	375	5	12
40C	495	7	16

◆ Check the page 60 for cable and connector types

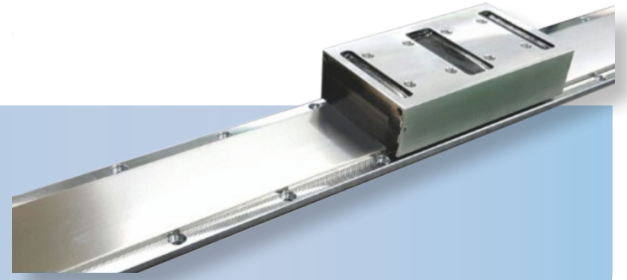
● Stator

Model SWL-ePL	Z	M	G
240	240	1	4
360	360	2	6
480	480	3	8
600	600	4	10



The specifications above are subject to change for enhancement of product performance, Without any prior notice.

IronCore Linear Motor



BASIC SPECIFICATIONS

- ◆ Rating Condition : Continuous
- ◆ Voltage Endurance : AC1500V, 1Min
- ◆ Operating Temperature : 0~40°C
- ◆ Coil Insulation Class : F Class(155°C)
- ◆ Hall Effect Device : Optional
- ◆ Power Supply Requirement : Trapezoidal or Sinusoidal 3-phase Brushless Amplifier

Performance Specifications

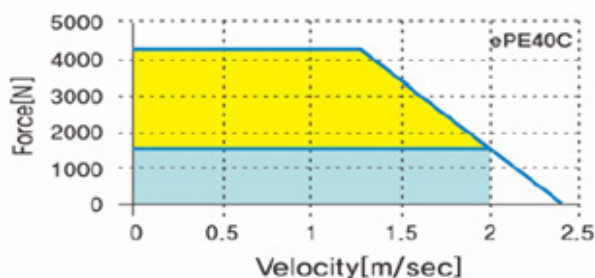
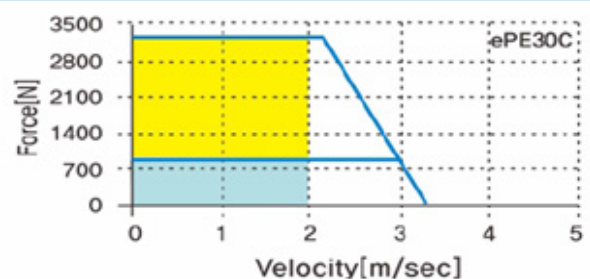
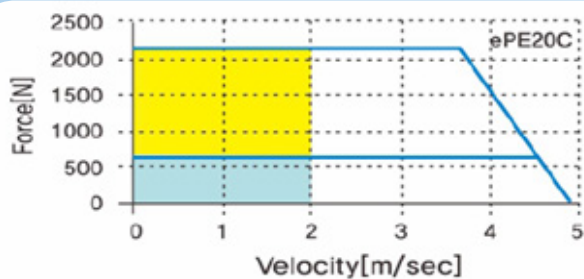
		Unit	SWL-ePE20C	SWL-ePE30C	SWL-ePE40C
Continuous	Force	N	770	1125	1500
	Current	Arms	10	10	10
Max.	Force	N	2165	3185	4300
	Current	Arms	30	30	30
Force Constant(kf)		N/Arms	77.5	113.5	155.6
Back EMF Constant(Ke)		Vrms/(m/sec)	25.8	37.8	51.9
Electrical Time Constant(Te)		msec	7.52	7.82	7.57
Resistance(L to L)		Ω	1.78	2.6	3.62
Inductance(L to L)		mH	13.39	20.33	27.4
Attraction Force		N	3090	4630	6180
Mover Weight		kg	8.2	12.2	16.2

◎ Magnet Pole Pitch(N-N) : 60mm, Stator Weight : 15.8kg/m

FORCE VS. VELOCITY CHARACTERISTICS

반복 사용 영역 (Intermittent duty zone)

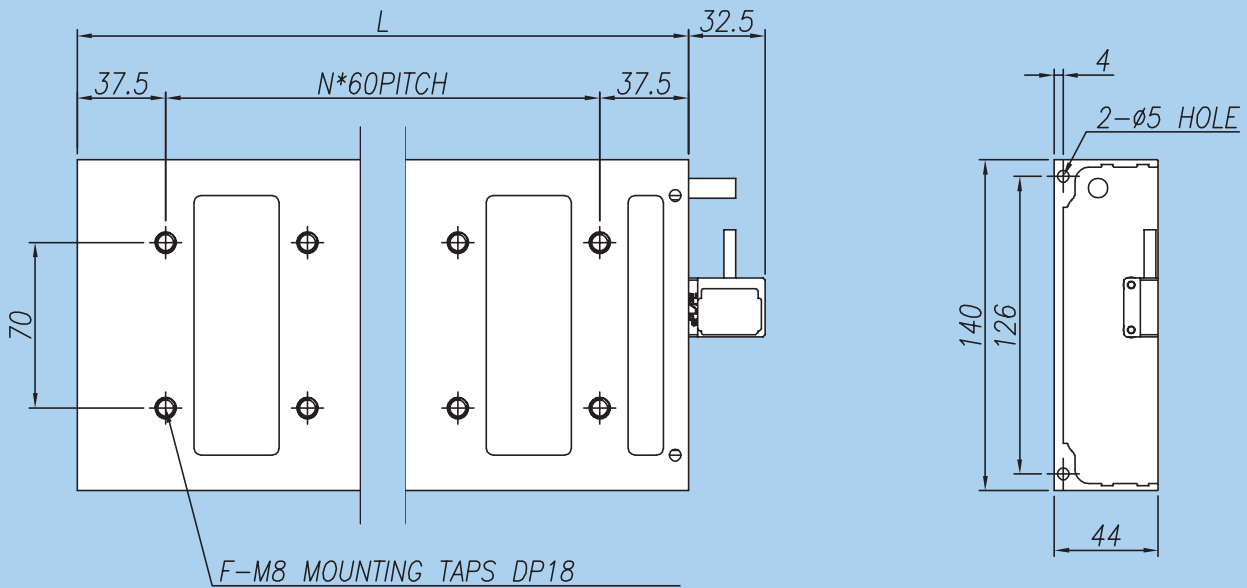
연속 사용 영역 (Continuous duty zone)



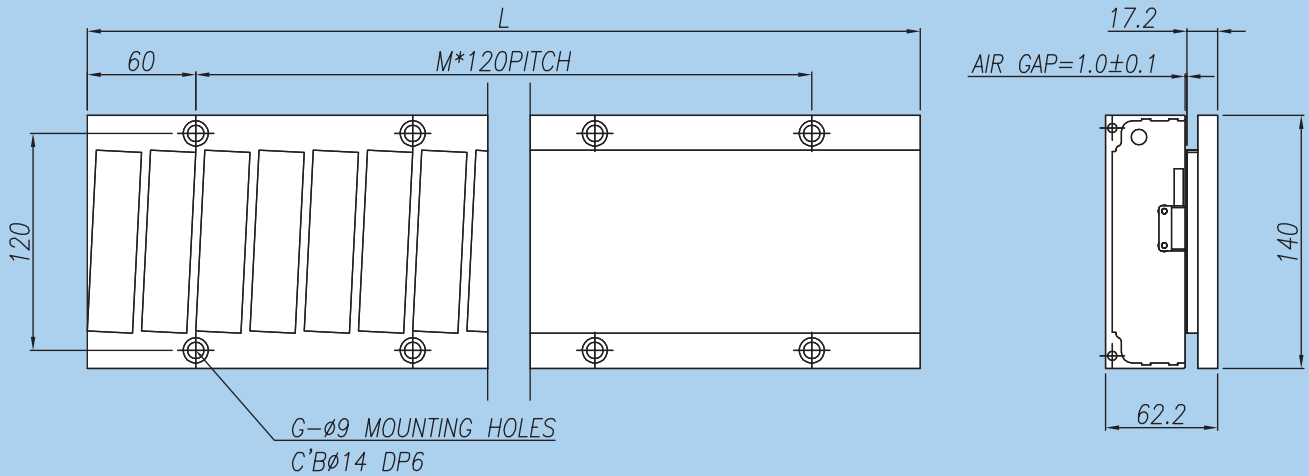
MECHANICAL DIMENSIONS

Mover Dimensions

Unit : mm



Stator Dimensions



● Mover

Model SWL-ePE	L	N	F
20C	255	3	8
30C	375	5	12
40C	495	7	16

◆ Check the page 60 for cable and connector types

● Stator

Model SWL-ePE	Z	M	G
240	240	1	4
360	360	2	6
480	480	3	8
600	600	4	10

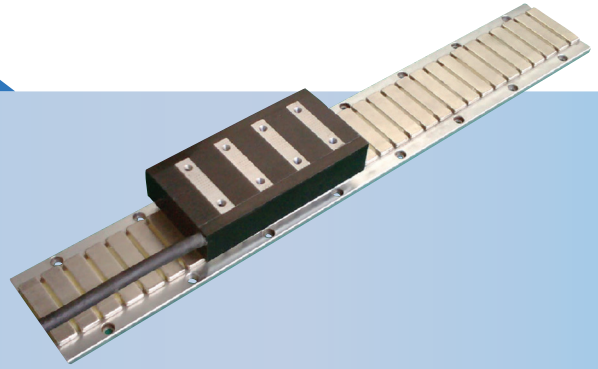


The specifications above are subject to change for enhancement of product performance, Without any prior notice.

IronCore Linear Motor

BASIC SPECIFICATIONS

Rating Condition : Continuous
 Voltage Endurance : AC1500V, 1Min
 Operating Temperature : 0~40℃
 Coil Insulation Class : F Class (155℃)
 Hall Effect Device : Optional
 Power Supply Requirement : Trapezoidal or Sinusoidal 3-phase Brushless Amplifier.

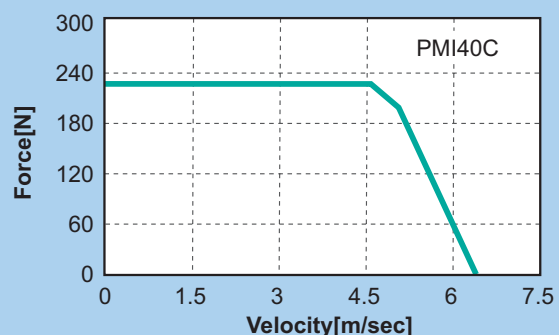
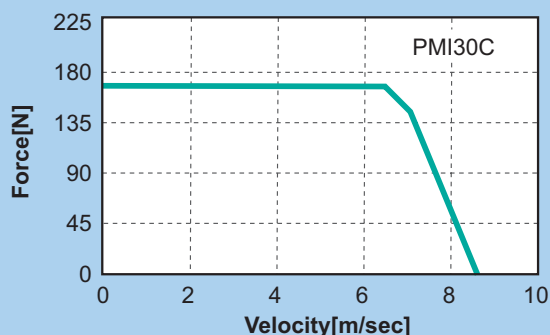
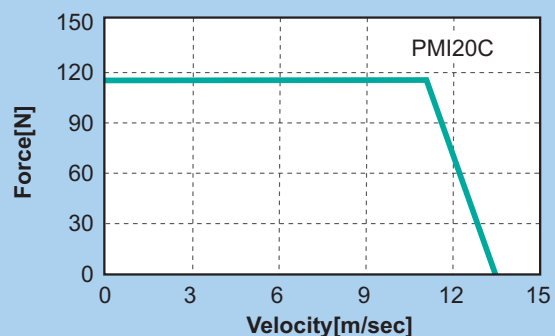
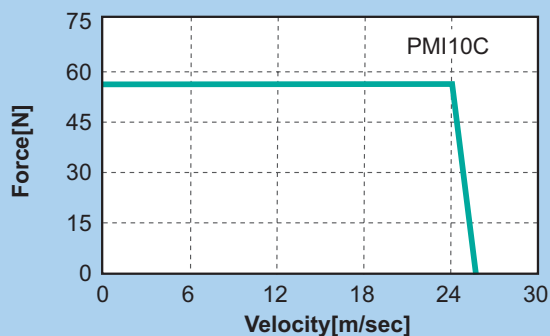


Performance Specifications

		Unit	SWL-PMI10C	SWL-PMI20C	SWL-PMI30C	SWL-PMI40C
Continuous	Force	N	18.8	38.0	56.8	75.2
	Current	Arms	1.3	1.3	1.3	1.3
Max.	Force	N	56.4	114.0	170.5	225.7
	Current	Arms	3.9	3.9	3.9	3.9
Force Constant(kf)		N/Arms	14.46	29.23	43.71	57.87
Back EMF Constant(Ke)		Vrms/(m/sec)	4.94	9.91	14.74	19.44
Electrical Time Constant(Te)		msec	2.40	2.48	2.48	2.51
Resistance(L to L)		Ω	4.67	9.18	13.77	18.10
Inductance(L to L)		mH	11.20	22.77	34.20	45.49
Attraction Force		N	100	200	300	400
Mover Weight		kg	0.22	0.41	0.60	0.76

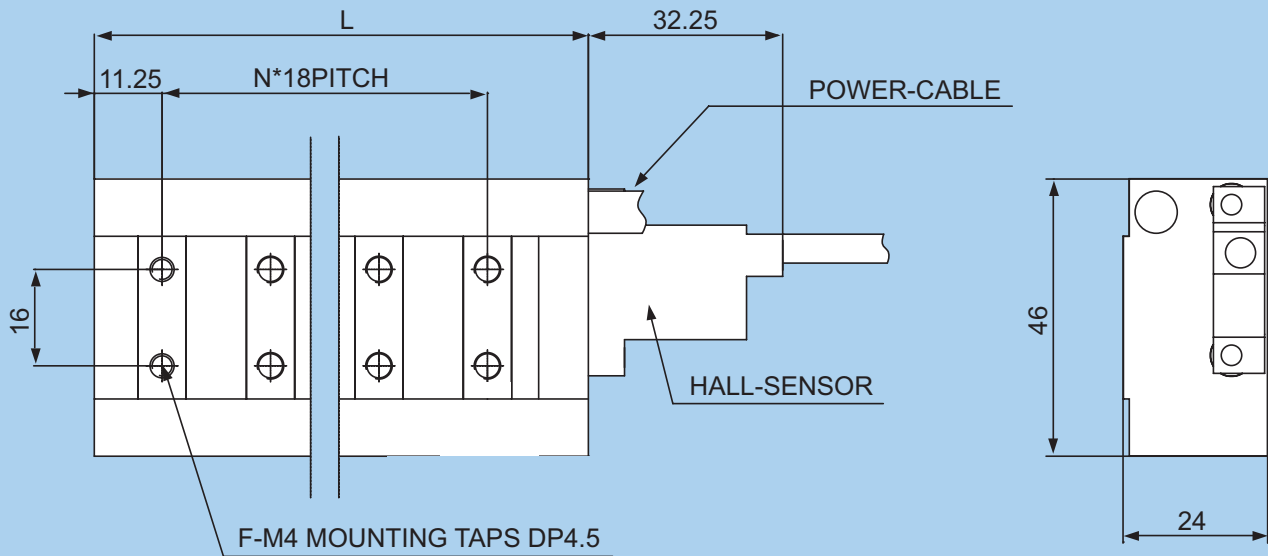
Magnet Pole pitch(N-N) : 18mm, Stator Weight : 1.7kg/m

FORCE VS. VELOCITY CHARACTERISTICS

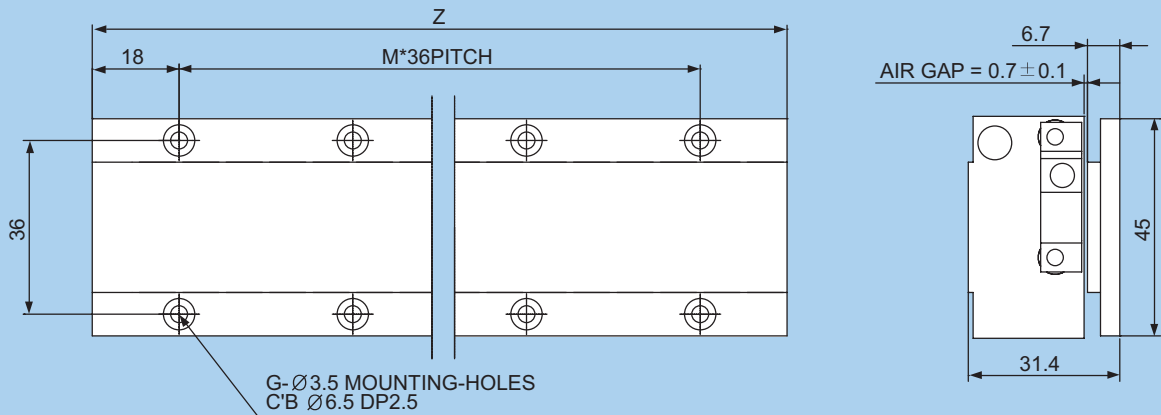


MECHANICAL DIMENSIONS

Mover Dimensions



Stator Dimensions



● Mover

Model SWL-PMI	L	N	F
10C	46	1	4
20C	82	3	8
30C	118	5	12
40C	154	7	16

◆ Check the page 60 for cable and connector types

● Stator

Model SWL-PMI	Z	M	G
72	72	1	4
108	108	2	6
144	144	3	8
180	180	4	10
216	216	5	12
252	252	6	14
288	288	7	16
324	324	8	18
360	360	9	20

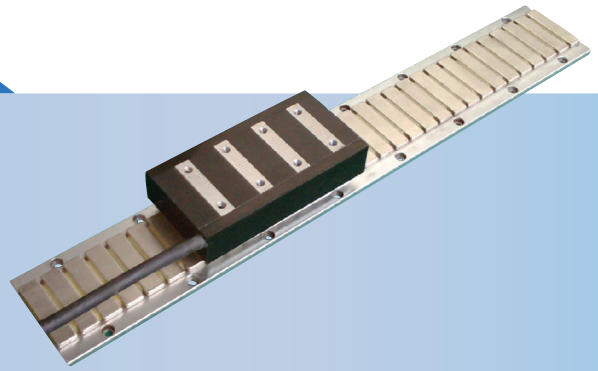


The specifications above are subject to change for enhancement of product performance, Without any prior notice.

IronCore Linear Motor

BASIC SPECIFICATIONS

Rating Condition : Continuous
 Voltage Endurance : AC1500V, 1Min
 Operating Temperature : 0~40℃
 Coil Insulation Class : F Class (155℃)
 Hall Effect Device : Optional
 Power Supply Requirement : Trapezoidal or Sinusoidal 3-phase Brushless Amplifier.

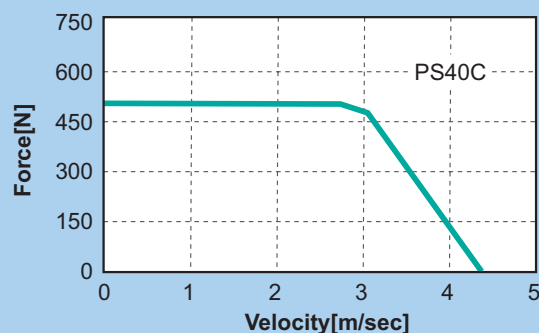
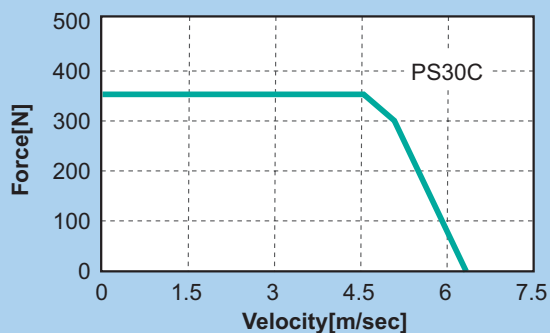
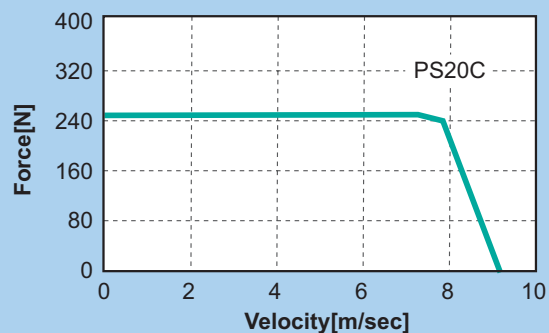
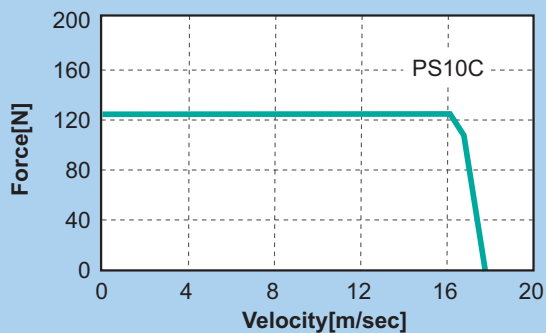


Performance Specifications

		Unit	SWL-PS10C	SWL-PS20C	SWL-PS30C	SWL-PS40C
Continuous	Force	N	42.1	84.5	125.1	166.7
	Current	Arms	2.0	2.0	2.0	2.0
Max.	Force	N	126.3	253.5	375.3	500.1
	Current	Arms	6.0	6.0	6.0	6.0
Force Constant(kf)		N/Arms	21.05	42.25	62.55	83.36
Back EMF Constant(Ke)		Vrms/(m/sec)	7.12	14.14	21.04	27.97
Electrical Time Constant(Te)		msec	3.41	3.52	3.54	3.53
Resistance(L to L)		Ω	3.86	7.63	11.40	15.25
Inductance(L to L)		mH	13.15	26.89	40.36	53.80
Attraction Force		N	210	410	610	810
Mover Weight		kg	0.38	0.69	1.00	1.31

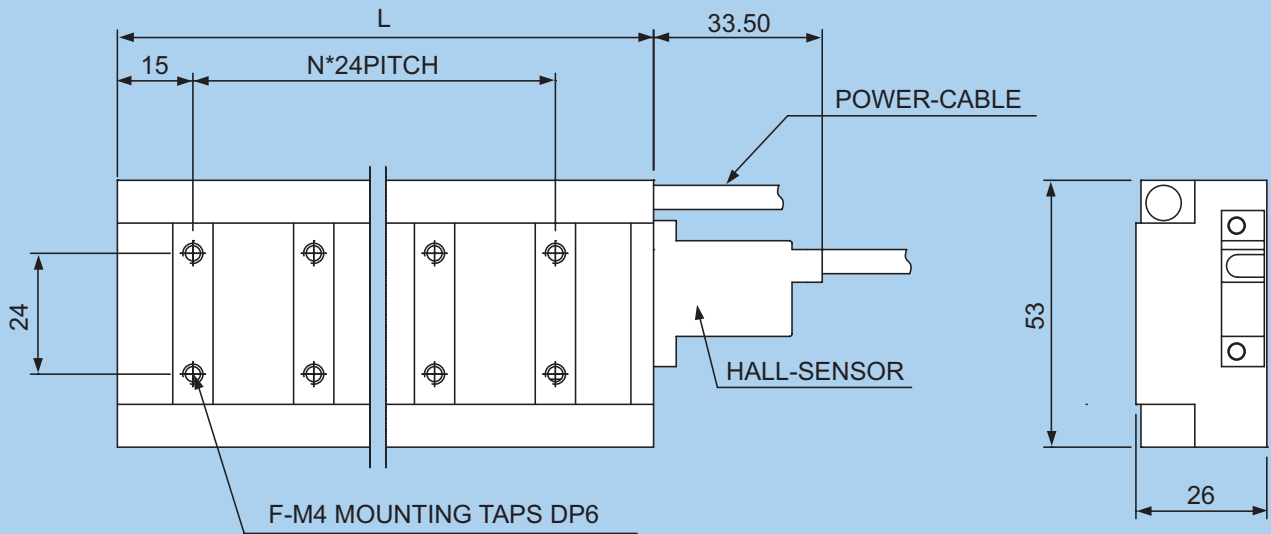
Magnet Pole pitch(N-N) : 24mm, Stator Weight : 2.4kg/m

FORCE VS. VELOCITY CHARACTERISTICS

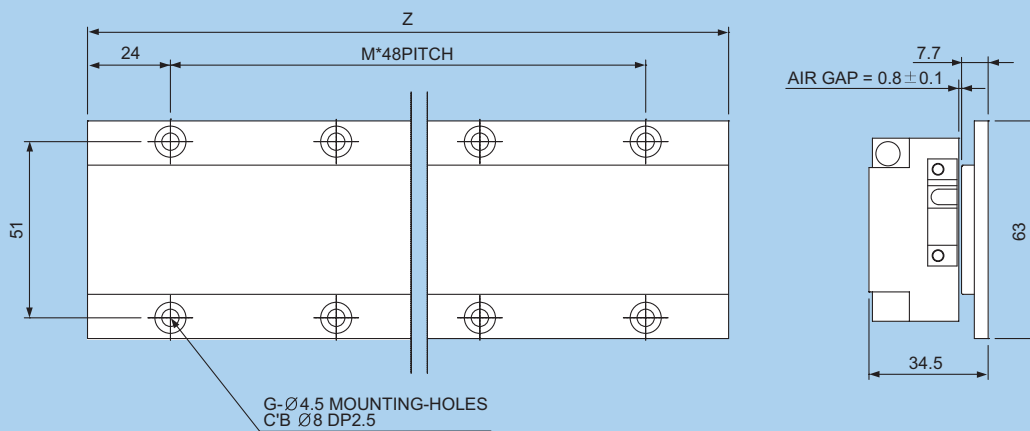


MECHANICAL DIMENSIONS

Mover Dimensions



Stator Dimensions



● Mover

Model SWL-PS	L	N	F
10C	58.5	1	4
20C	106.5	3	8
30C	154.5	5	12
40C	202.5	7	16

◆ Check the page 60 for cable and connector types

● Stator

Model SWL-PS	Z	M	G
96	96	1	4
144	144	2	6
192	192	3	8
240	240	4	10
288	288	5	12
336	336	6	14
384	384	7	16
432	432	8	18
480	480	9	20



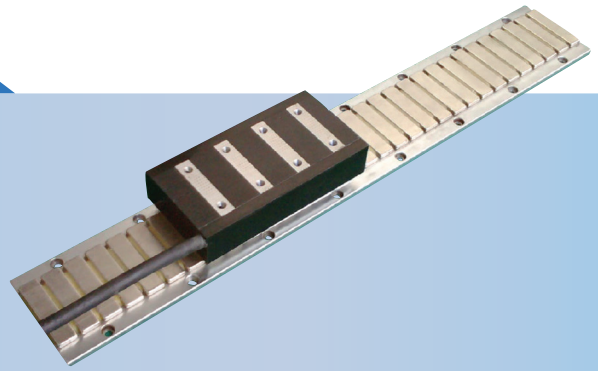
The specifications above are subject to change for enhancement of product performance, Without any prior notice.

SWL-PM SERIES

IronCore Linear Motor

BASIC SPECIFICATIONS

Rating Condition : Continuous
 Voltage Endurance : AC1500V, 1Min
 Operating Temperature : 0~40℃
 Coil Insulation Class : F Class (155℃)
 Hall Effect Device : Optional
 Power Supply Requirement : Trapezoidal or Sinusoidal 3-phase Brushless Amplifier.

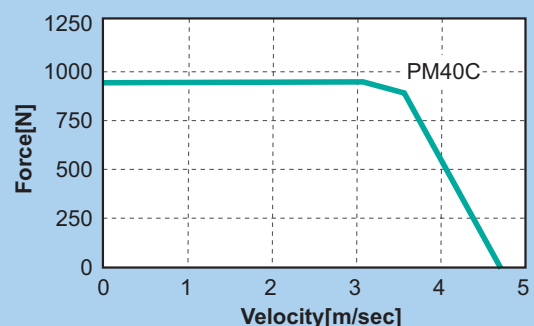
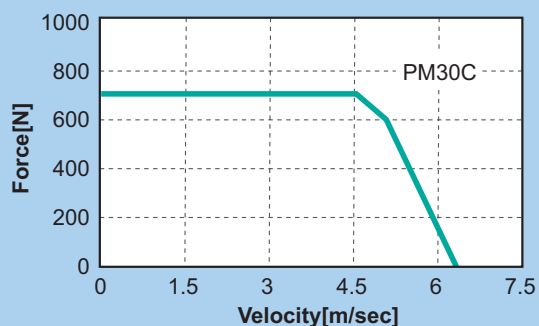
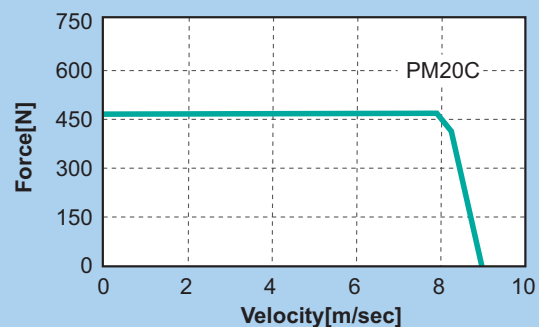
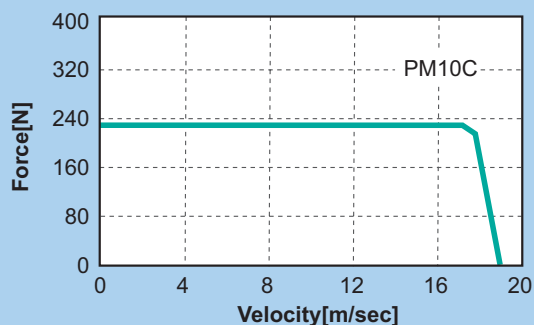


Performance Specifications

		Unit	SWL-PM10C	SWL-PM20C	SWL-PM30C	SWL-PM40C
Continuous	Force	N	78.3	157.4	236.2	315.3
	Current	Arms	3.8	3.8	3.8	3.8
Max.	Force	N	234.9	472.2	708.6	945.9
	Current	Arms	11.4	11.4	11.4	11.4
Force Constant(kf)		N/Arms	20.61	41.42	62.16	82.97
Back EMF Constant(Ke)		Vrms/(m/sec)	7.01	13.95	20.80	27.68
Electrical Time Constant(Te)		msec	4.71	4.69	4.58	4.59
Resistance(L to L)		Ω	1.63	3.28	5.03	6.68
Inductance(L to L)		mH	7.68	15.38	23.01	30.65
Attraction Force		N	390	770	1160	1540
Mover Weight		kg	0.63	1.18	1.73	2.27

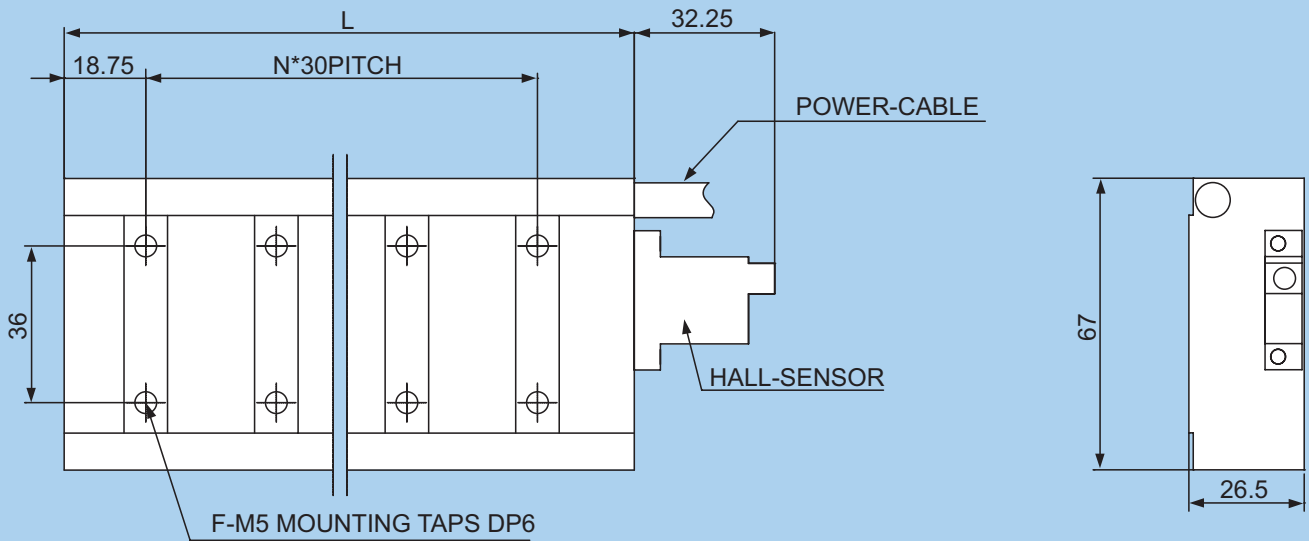
Magnet Pole pitch(N-N) : 30mm, Stator Weight : 3.6kg/m

FORCE VS. VELOCITY CHARACTERISTICS

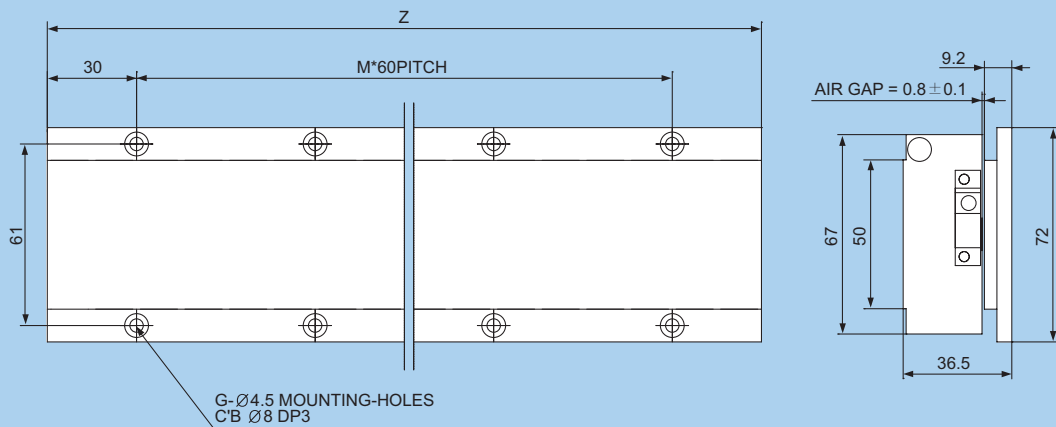


MECHANICAL DIMENSIONS

Mover Dimensions



Stator Dimensions



● Mover

Model SWL-PM	L	N	F
10C	71	1	4
20C	131	3	8
30C	191	5	12
40C	251	7	16

◆ Check the page 60 for cable and connector types

● Stator

Model SWL-PM	Z	M	G
120	120	1	4
180	180	2	6
240	240	3	8
300	300	4	10
360	360	5	12
420	420	6	14
480	480	7	16
540	540	8	18
600	600	9	20



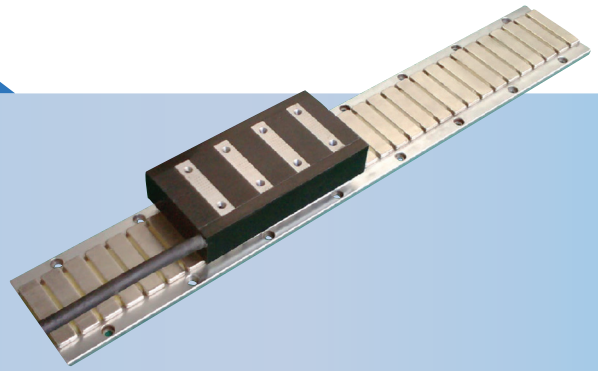
The specifications above are subject to change for enhancement of product performance, Without any prior notice.

SWL-PL SERIES

IronCore Linear Motor

BASIC SPECIFICATIONS

Rating Condition : Continuous
 Voltage Endurance : AC1500V, 1Min
 Operating Temperature : 0~40℃
 Coil Insulation Class : F Class (155℃)
 Hall Effect Device : Optional
 Power Supply Requirement : Trapezoidal or Sinusoidal 3-phase Brushless Amplifier.

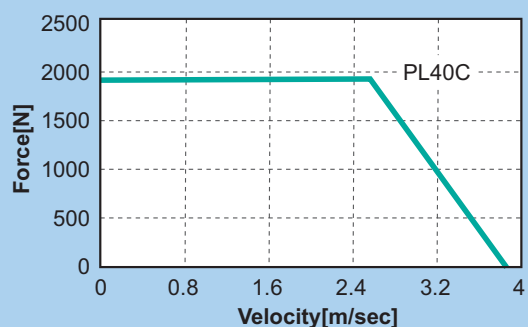
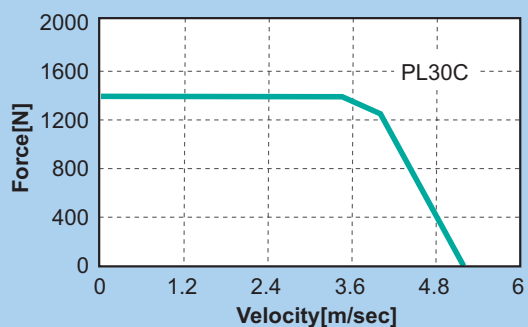
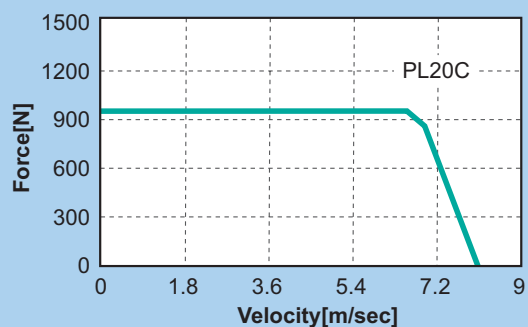
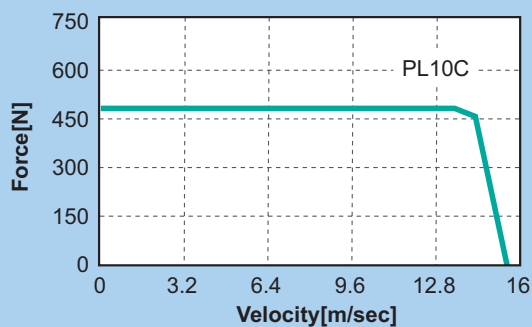


Performance Specifications

		Unit	SWL-PL10C	SWL-PL20C	SWL-PL30C	SWL-PL40C
Continuous	Force	N	162.6	319.3	480.5	639.3
	Current	Arms	6.4	6.4	6.4	6.4
Max.	Force	N	487.8	957.9	1441.5	1917.9
	Current	Arms	19.2	19.2	19.2	19.2
Force Constant(kf)		N/Arms	25.41	49.89	75.08	99.89
Back EMF Constant(Ke)		Vrms/(m/sec)	8.40	16.60	24.88	33.13
Electrical Time Constant(Te)		msec	6.43	6.39	6.38	6.36
Resistance(L to L)		Ω	1.18	2.36	3.54	4.72
Inductance(L to L)		mH	7.59	15.08	22.59	30.03
Attraction Force		N	690	1380	2070	2760
Mover Weight		kg	2.47	4.27	6.07	7.87

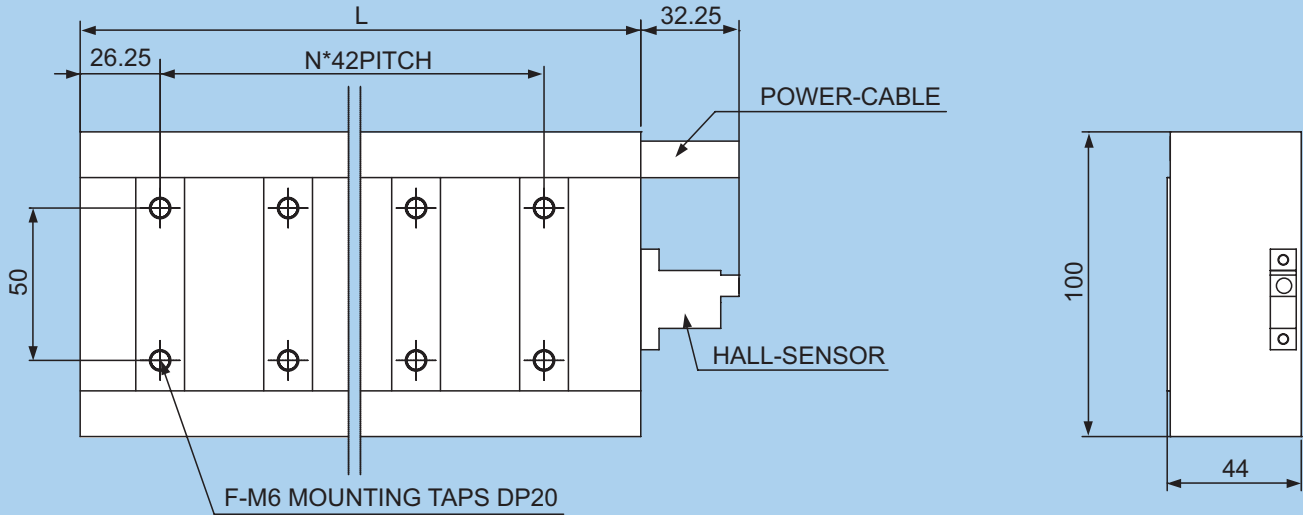
Magnet Pole pitch(N-N) : 42mm, Stator Weight : 6.9kg/m

FORCE VS. VELOCITY CHARACTERISTICS

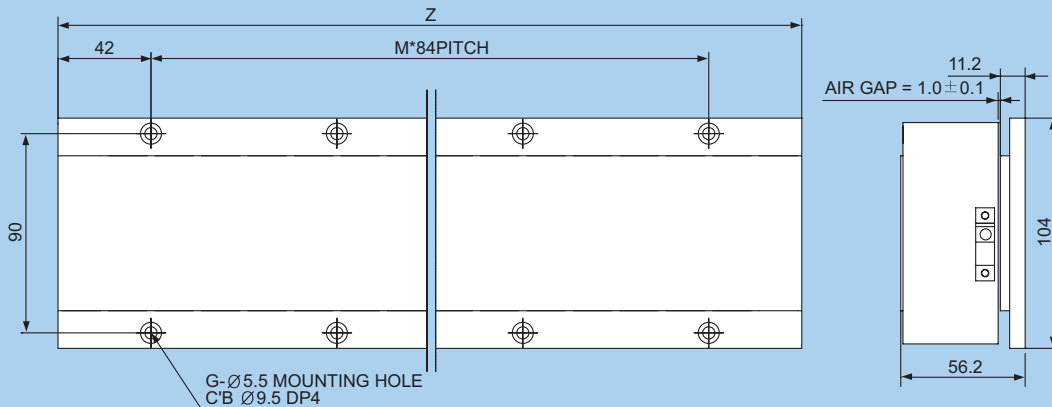


MECHANICAL DIMENSIONS

Mover Dimensions



Stator Dimensions



● Mover

Model SWL-PL	L	N	F
10C	100	1	4
20C	184	3	8
30C	268	5	12
40C	352	7	16

◆ Check the page 60 for cable and connector types

● Stator

Model SWL-PL	Z	M	G
168	168	1	4
252	252	2	6
336	336	3	8
420	420	4	10
504	504	5	12
588	588	6	14



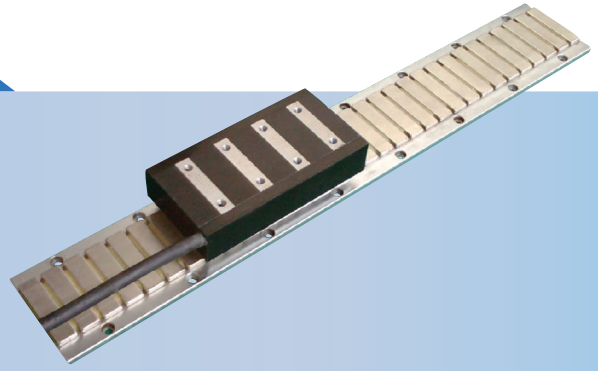
The specifications above are subject to change for enhancement of product performance, Without any prior notice.

SWL-PE SERIES

IronCore Linear Motor

BASIC SPECIFICATIONS

Rating Condition : Continuous
 Voltage Endurance : AC1500V, 1Min
 Operating Temperature : 0~40℃
 Coil Insulation Class : F Class (155℃)
 Hall Effect Device : Optional
 Power Supply Requirement : Trapezoidal or Sinusoidal 3-phase Brushless Amplifier.

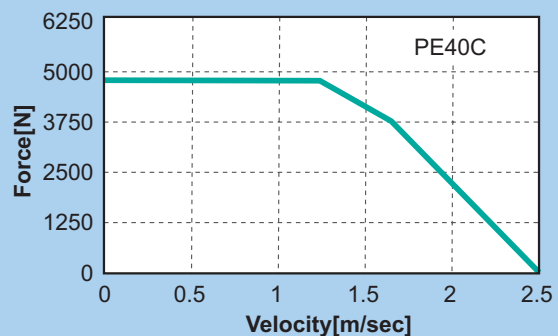
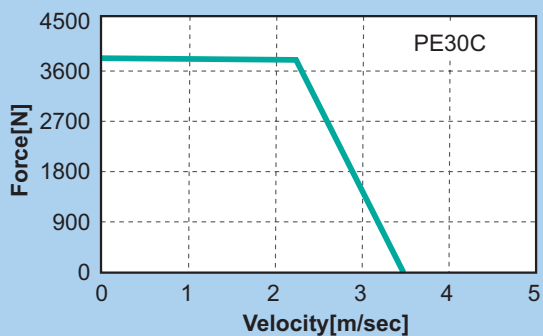
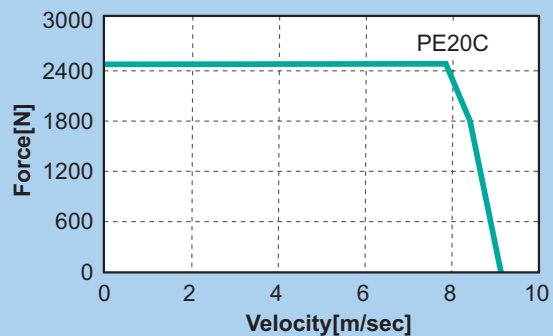
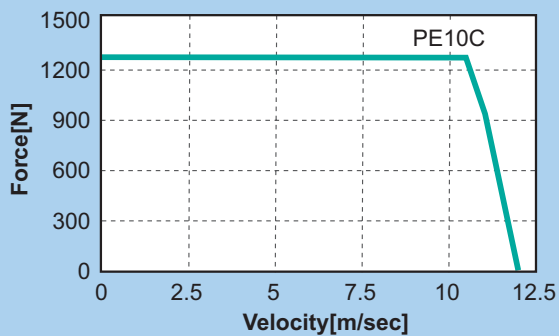


Performance Specifications

		Unit	SWL-PE10C	SWL-PE20C	SWL-PE30C	SWL-PE40C
Continuous	Force	N	401.8	822.6	1231.6	1638
	Current	Arms	11.3	11.3	11.3	11.3
Max.	Force	N	1205.4	2467.7	3694.7	4915
	Current	Arms	33.9	33.9	33.9	33.9
Force Constant(kf)		N/Arms	35.56	72.79	108.99	145
Back EMF Constant(Ke)		Vrms/(m/sec)	12	24	36	48
Electrical Time Constant(Te)		msec	13.50	15.60	15.50	15.5
Resistance(L to L)		Ω	0.815	1.63	2.47	3.26
Inductance(L to L)		mH	5.78	11.56	17.57	23.13
Attraction Force		N	1750	3500	5250	7000
Mover Weight		kg	5.3	9.8	14.4	18.9

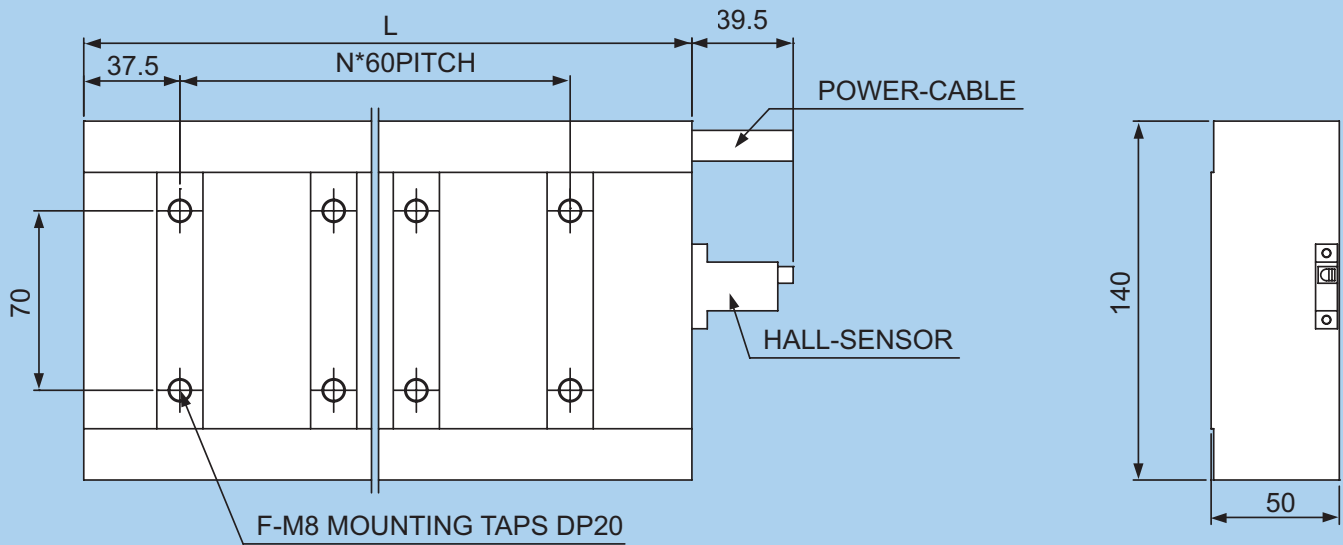
Magnet Pole pitch(N-N) : 60mm, Stator Weight : 13.7kg/m

FORCE VS. VELOCITY CHARACTERISTICS

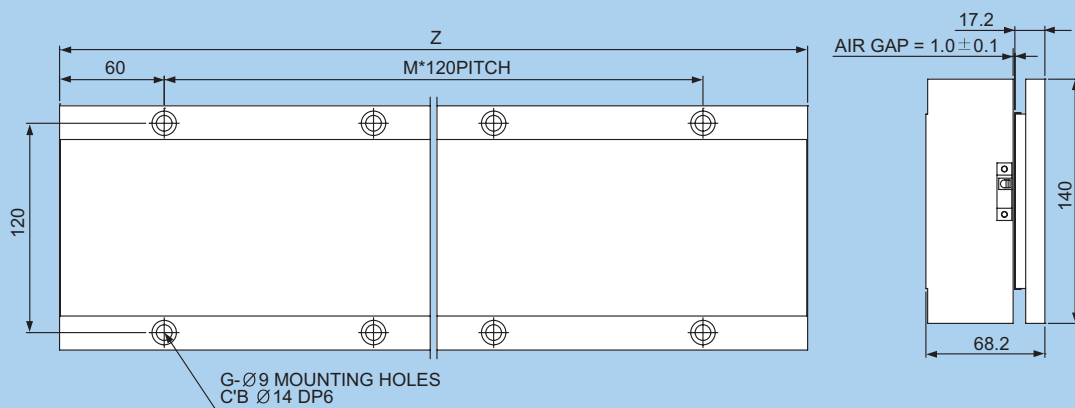


MECHANICAL DIMENSIONS

Mover Dimensions



Stator Dimensions



● Mover

Model SWL-PE	L	N	F
10C	145	1	4
20C	265	3	8
30C	385	5	12
40C	505	7	16

● Stator

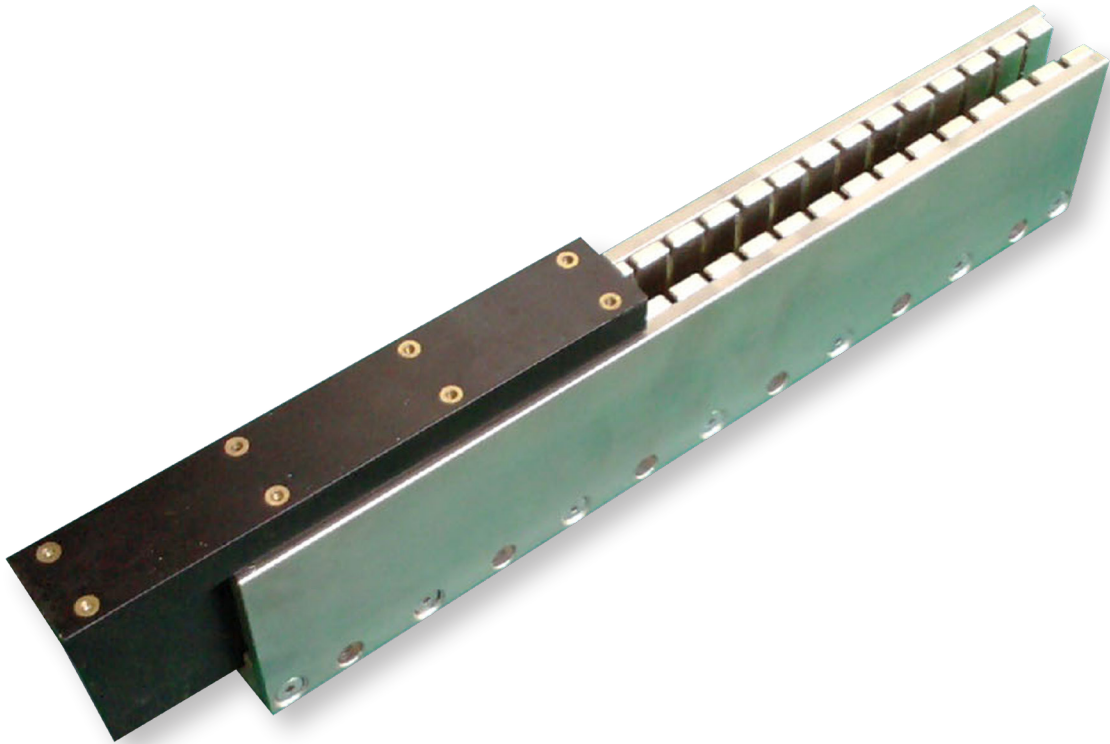
Model SWL-PE	Z	M	G
240	240	1	4
360	360	2	6
480	480	3	8
600	600	4	10

◆ Check the page 60 for cable and connector types



The specifications above are subject to change for enhancement of product performance, Without any prior notice.

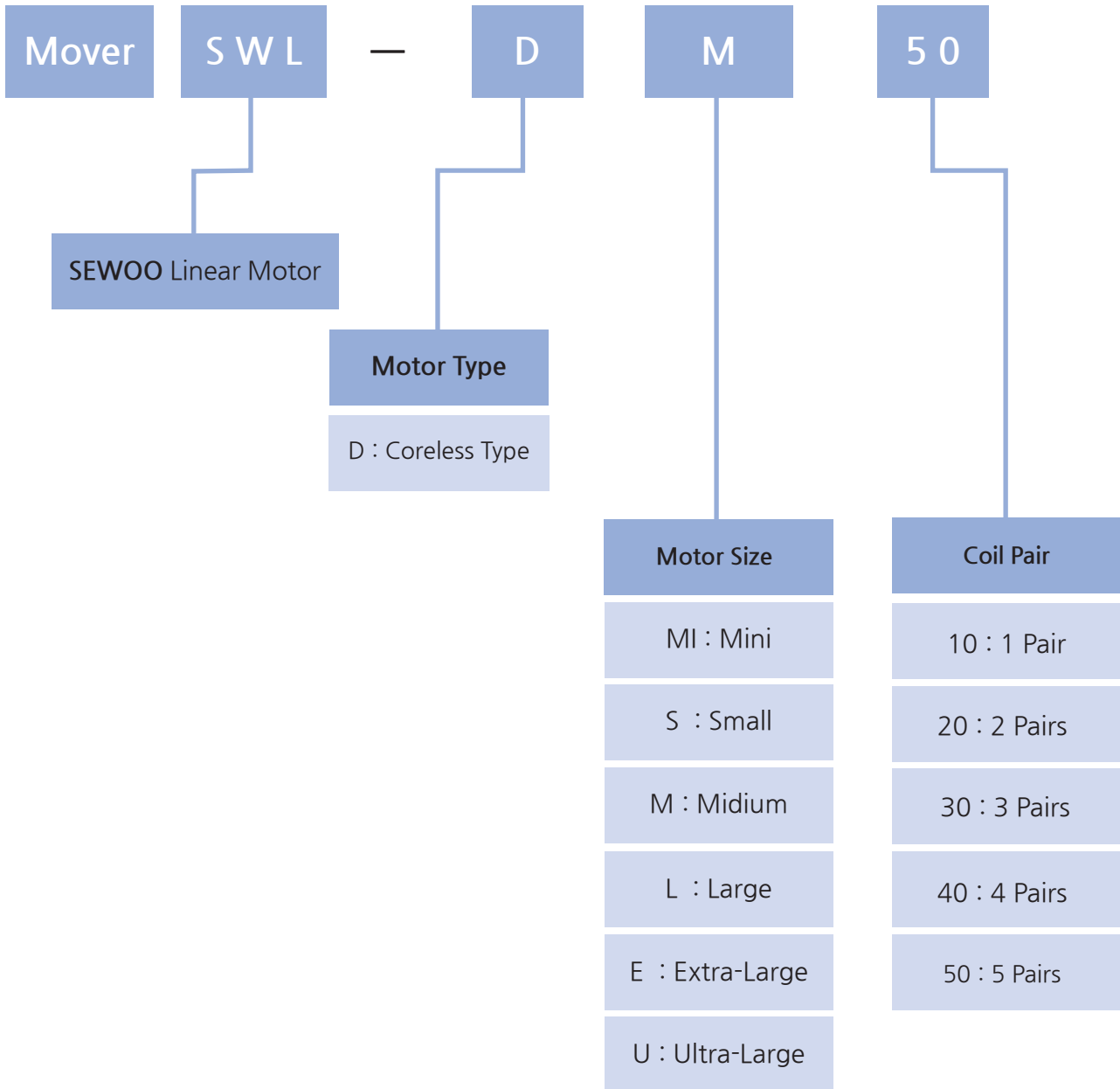
LINEAR MOTOR SERIES



CORELESS TYPE

MOTOR IS COMPOSED OF A MOVER (COIL ASSEMBLY)
AND A STATOR(MAGNET ARRAY)

LINEAR MOTOR CODING SYSTEM

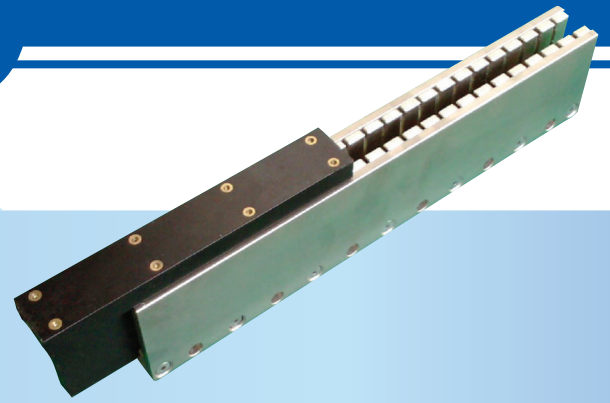


MOTOR	Continuous Force
DMI20~50	24~61N
DS20~50	45~113N
DM20~50	83~208N
DL20~50	188~471N
DE10~40	300~1203N
DU20~40	1100~2200N

Coreless Linear Motor

BASIC SPECIFICATIONS

Rating Condition : Continuous
 Voltage Endurance : AC1500V, 1Min
 Operating Temperature : 0~40℃
 Coil Insulation Class : F Class (155℃)
 Hall Effect Device : Optional
 Air cooling available at no extra cost.
 Power Supply Requirement : Trapezoidal or Sinusoidal 3-phase Brushless Amplifier.

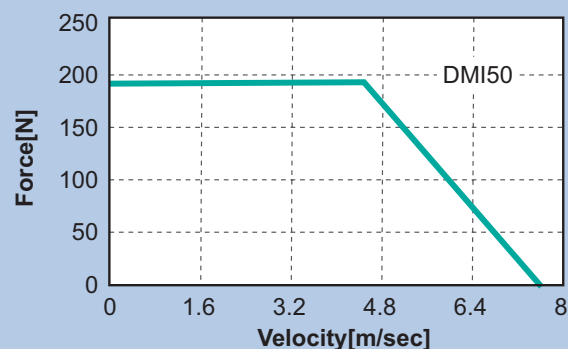
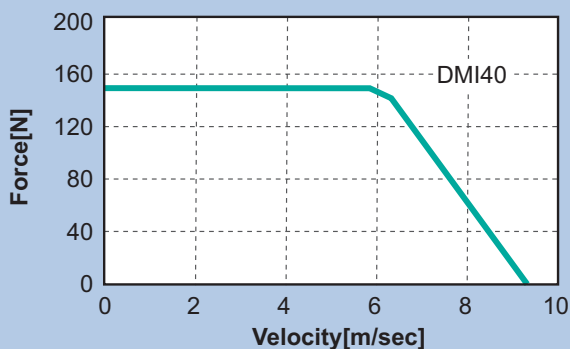
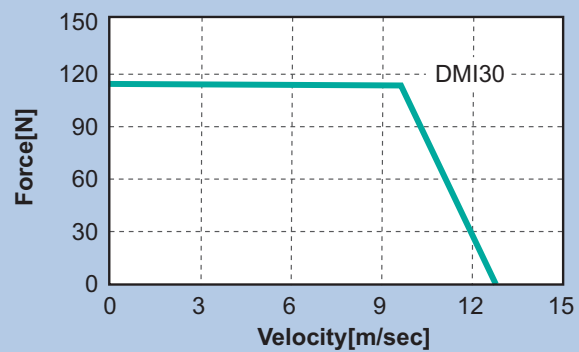
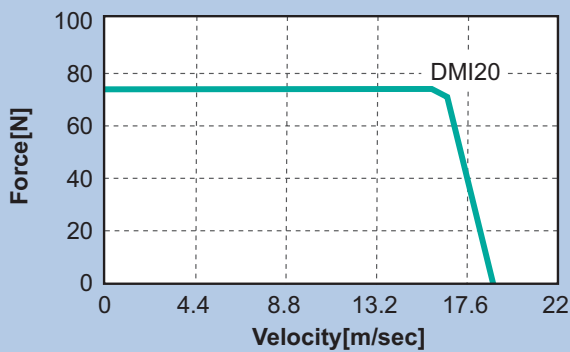


Performance Specifications

		Unit	SWL-DMI20	SWL-DMI30	SWL-DMI40	SWL-DMI50
Continuous	Force	N	24.7	37.0	49.4	61.7
	Current	Arms	1.3	1.3	1.3	1.3
Max.	Force	N	74.1	111.1	148.2	185.2
	Current	Arms	3.9	3.9	3.9	3.9
Force Constant(kf)		N/Arms	19.0	28.5	38.0	47.5
Back EMF Constant(Ke)		Vrms/(m/sec)	6.78	10.17	13.56	16.95
Electrical Time Constant(Te)		msec	0.38	0.38	0.38	0.38
Resistance(L to L)		Ω	10.39	15.59	20.78	25.98
Inductance(L to L)		mH	3.95	5.93	7.91	9.89
Mover Weight		kg	0.25	0.35	0.45	0.55

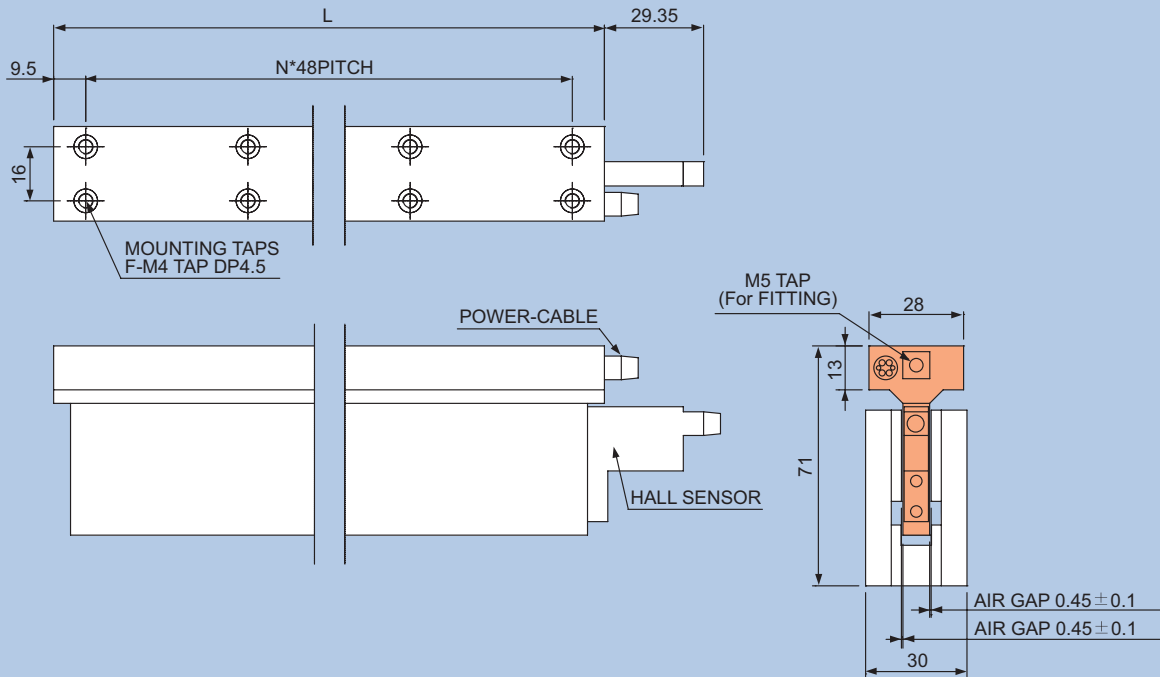
Magner Pole pitch (N-N) : 24mm, Stator Weight : 7.9kg/m

FORCE VS. VELOCITY CHARACTERISTICS

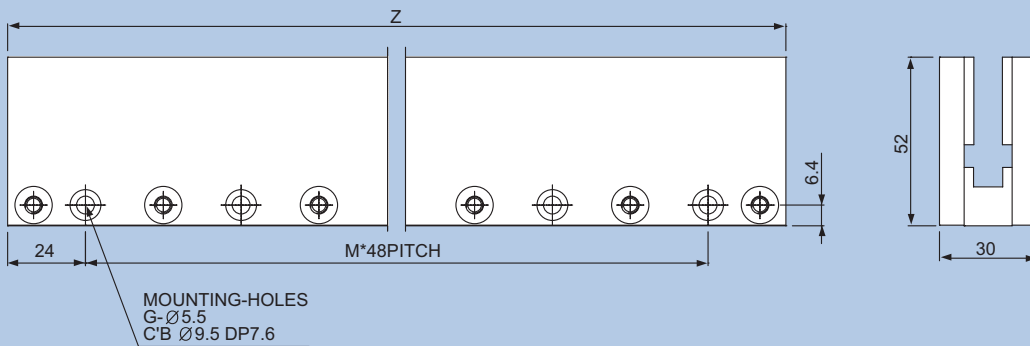


MECHANICAL DIMENSIONS

Mover Dimensions



Stator Dimensions



● Mover

Model SWL-DMI	L	N	F
20	115	2	6
30	163	3	8
40	211	4	10
50	259	5	12

◆ Check the page 61 for cable and connector types

● Stator

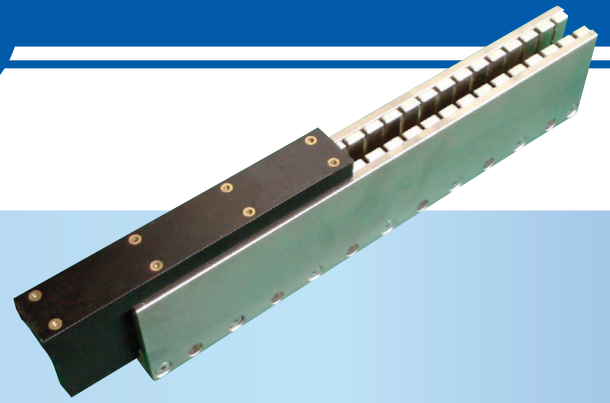
Model SWL-DMI	Z	M	G
96	96	1	2
144	144	2	3
192	192	3	4
240	240	4	5
288	288	5	6
336	336	6	7
384	384	7	8
432	432	8	9
480	480	9	10

▶ The specifications above are subject to change for enhancement of product performance, Without any prior notice.

Coreless Linear Motor

BASIC SPECIFICATIONS

Rating Condition : Continuous
 Voltage Endurance : AC1500V, 1Min
 Operating Temperature : 0~40℃
 Coil Insulation Class : F Class (155℃)
 Hall Effect Device : Optional
 Air cooling available at no extra cost.
 Power Supply Requirement : Trapezoidal or Sinusoidal 3-phase Brushless Amplifier.

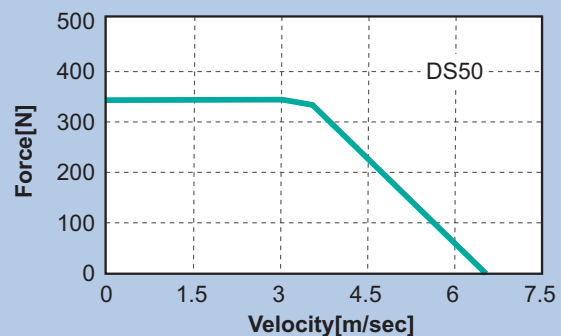
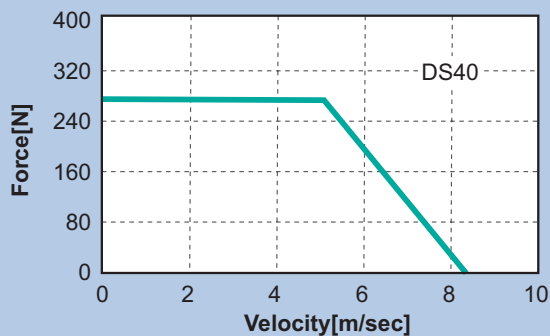
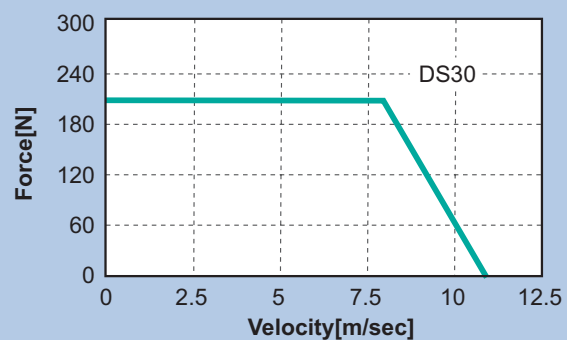
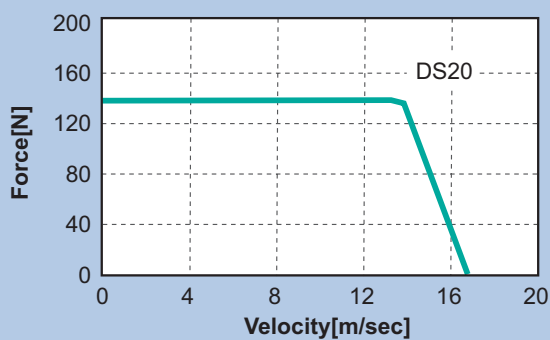


Performance Specifications

		Unit	SWL-DS20	SWL-DS30	SWL-DS40	SWL-DS50
Continuous	Force	N	45.2	67.8	90.5	113.1
	Current	Arms	1.96	1.96	1.96	1.96
Max.	Force	N	135.7	203.5	271.4	339.2
	Current	Arms	5.9	5.9	5.9	5.9
Force Constant(kf)		N/Arms	23.07	34.61	46.15	57.69
Back EMF Constant(Ke)		Vrms/(m/sec)	7.69	11.54	15.38	19.23
Electrical Time Constant(Te)		msec	0.44	0.44	0.44	0.44
Resistance(L to L)		Ω	8.41	12.65	16.89	21.13
Inductance(L to L)		mH	3.74	5.61	7.47	9.34
Mover Weight		kg	0.40	0.57	0.73	0.90

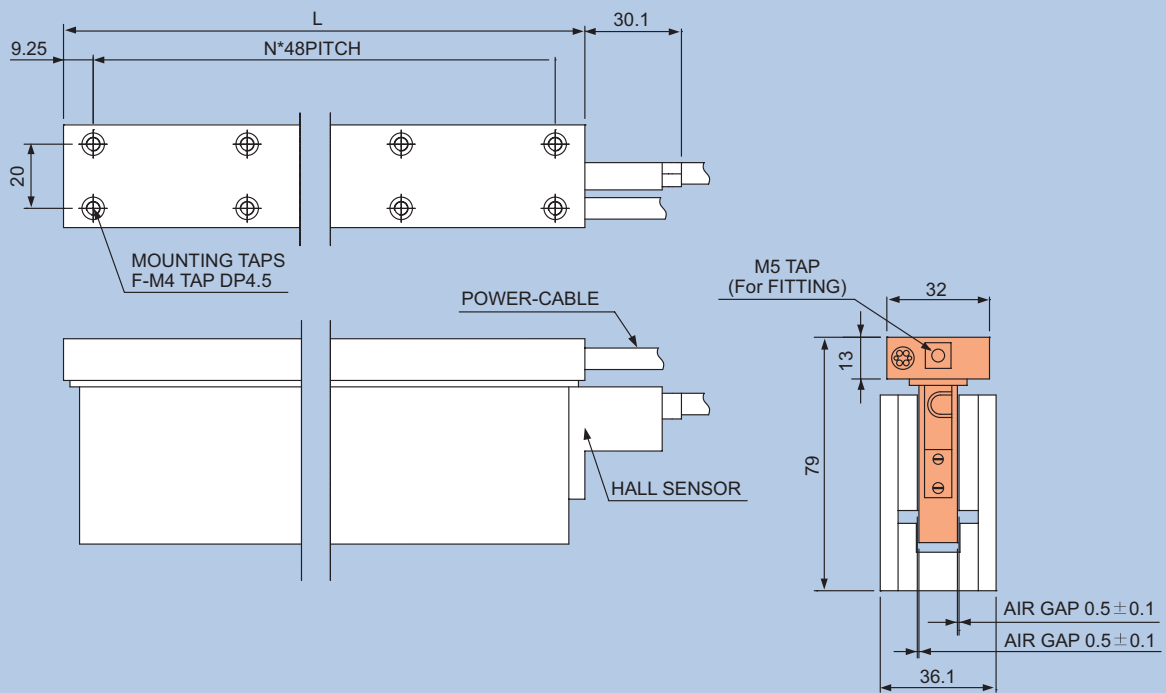
Magnet Pole pitch(N-N) : 24mm, Stator Weight : 10.6kg/m

FORCE VS. VELOCITY CHARACTERISTICS

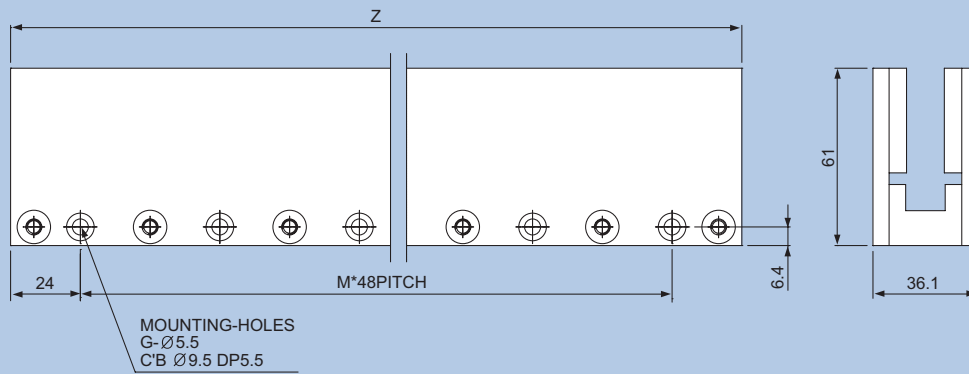


MECHANICAL DIMENSIONS

Mover Dimensions



Stator Dimensions



● Mover

Model SWL-DS	L	N	F
20	114.5	2	6
30	162.5	3	8
40	210.5	4	10
50	258.5	5	12

◆ Check the page 61 for cable and connector types

● Stator

Model SWL-DS	Z	M	G
96	96	1	2
144	144	2	3
192	192	3	4
240	240	4	5
288	288	5	6
336	336	6	7
384	384	7	8
432	432	8	9
480	480	9	10

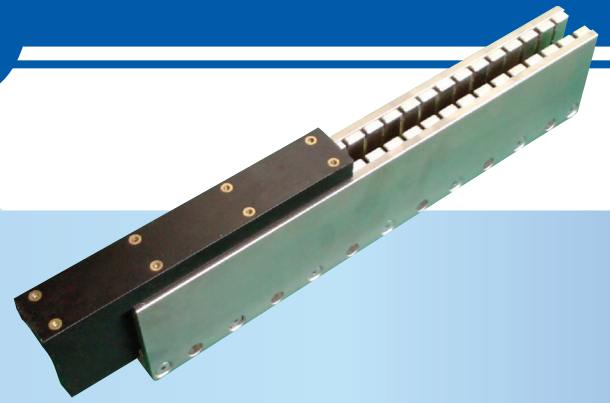


The specifications above are subject to change for enhancement of product performance, Without any prior notice.

Coreless Linear Motor

BASIC SPECIFICATIONS

Rating Condition : Continuous
 Voltage Endurance : AC1500V, 1Min
 Operating Temperature : 0~40℃
 Coil Insulation Class : F Class (155℃)
 Hall Effect Device : Optional
 Air cooling available at no extra cost.
 Power Supply Requirement : Trapezoidal or Sinusoidal 3-phase Brushless Amplifier.

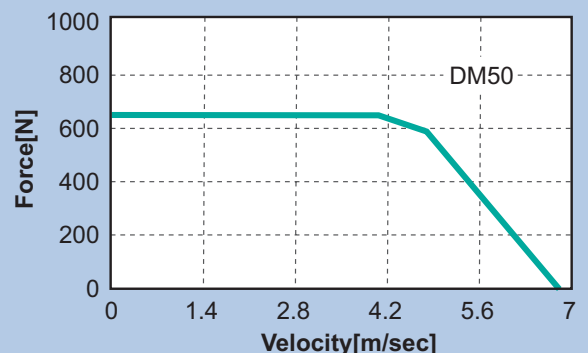
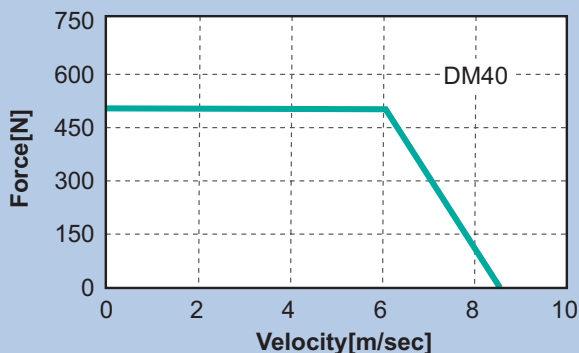
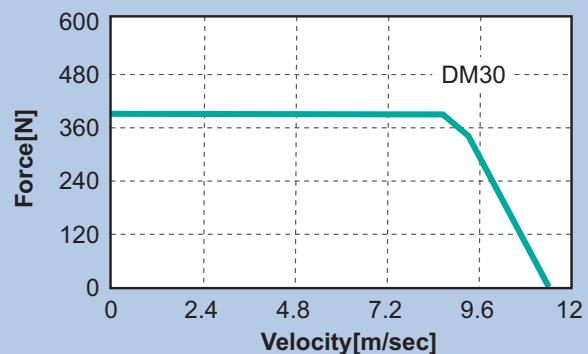
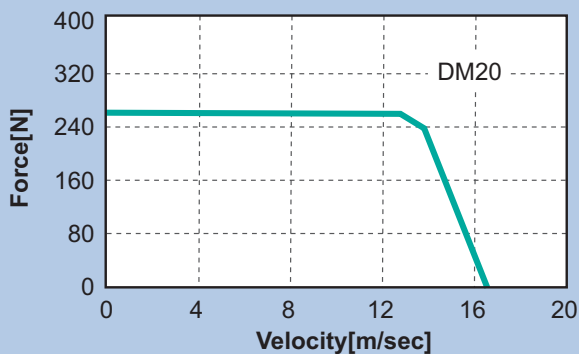


Performance Specifications

		Unit	SWL-DM20	SWL-DM30	SWL-DM40	SWL-DM50
Continuous	Force	N	83.3	125.0	166.6	208.3
	Current	Arms	3.65	3.65	3.65	3.65
Max.	Force	N	250.0	374.9	499.9	624.9
	Current	Arms	11	11	11	11
Force Constant(kf)		N/Arms	22.83	34.24	45.65	57.07
Back EMF Constant(Ke)		Vrms/(m/sec)	7.61	11.41	15.22	19.02
Electrical Time Constant(Te)		msec	0.63	0.65	0.66	0.67
Resistance(L to L)		Ω	3.44	5.02	6.60	8.18
Inductance(L to L)		mH	2.18	3.28	4.37	5.46
Mover Weight		kg	0.60	0.88	1.16	1.44

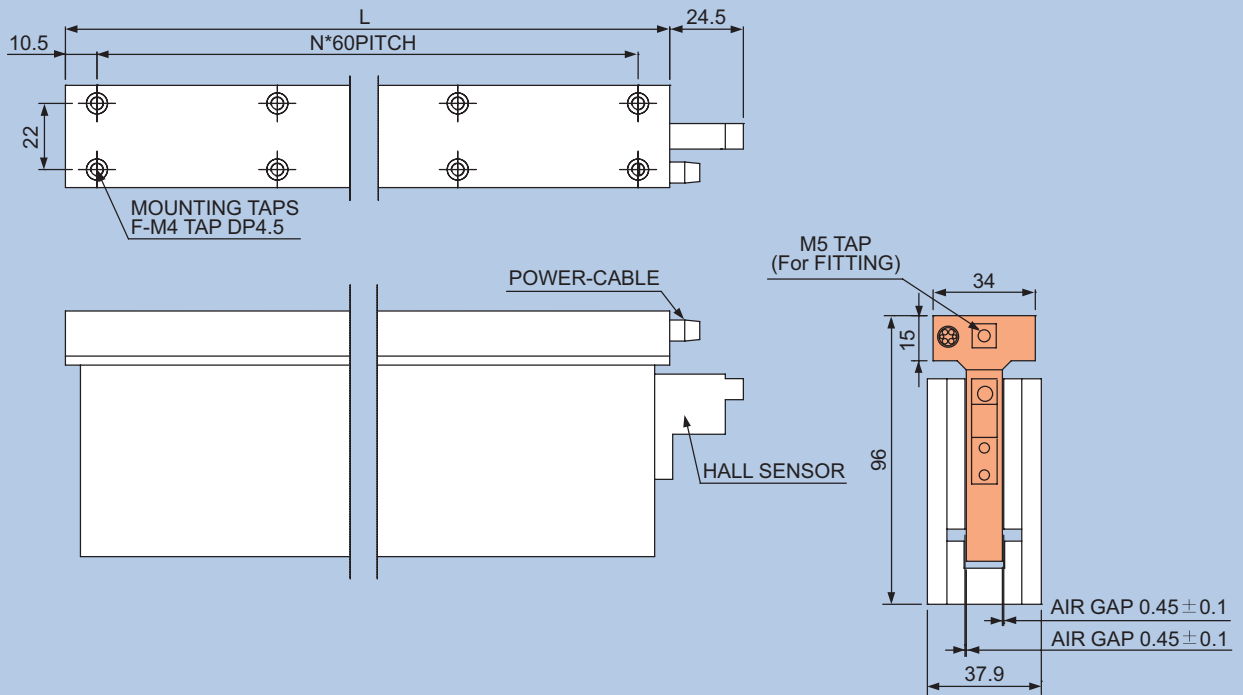
Magnet Pole pitch(N-N) : 30mm, Stator Weight : 11.2kg/m

FORCE VS. VELOCITY CHARACTERISTICS

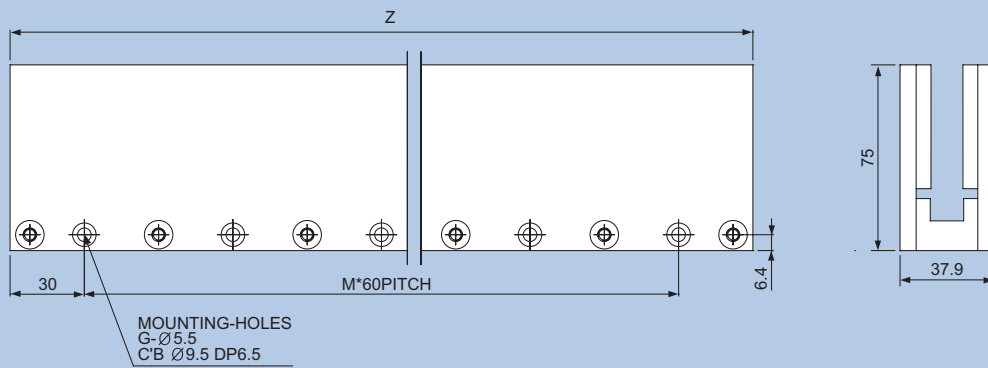


MECHANICAL DIMENSIONS

Mover Dimensions



Stator Dimensions



● Mover

Model SWL-DM	L	N	F
20	141	2	6
30	201	3	8
40	261	4	10
50	321	5	12

◆ Check the page 61 for cable and connector types

● Stator

Model SWL-DM	Z	M	G
120	120	1	2
180	180	2	3
240	240	3	4
300	300	4	5
360	360	5	6
420	420	6	7
480	480	7	8
540	540	8	9
600	600	9	10

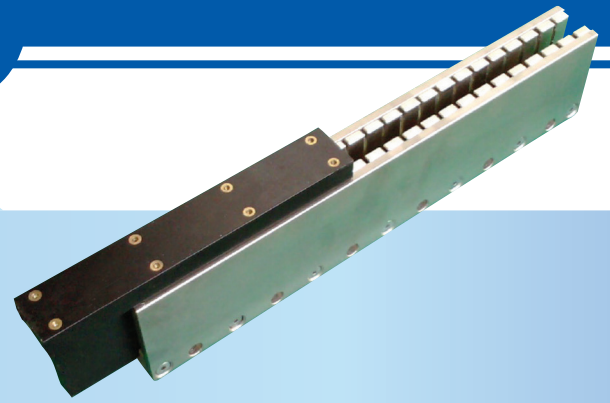


The specifications above are subject to change for enhancement of product performance, Without any prior notice.

Coreless Linear Motor

BASIC SPECIFICATIONS

Rating Condition : Continuous
 Voltage Endurance : AC1500V, 1Min
 Operating Temperature : 0~40℃
 Coil Insulation Class : F Class (155℃)
 Hall Effect Device : Optional
 Air cooling available at no extra cost.
 Power Supply Requirement : Trapezoidal or Sinusoidal 3-phase Brushless Amplifier.

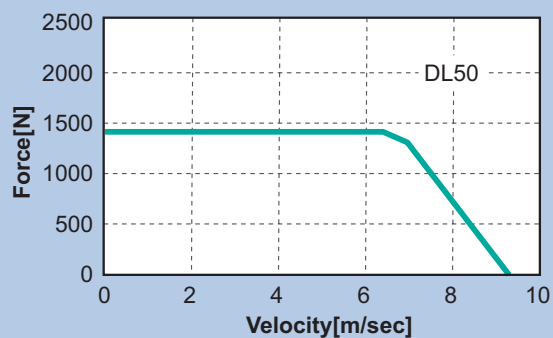
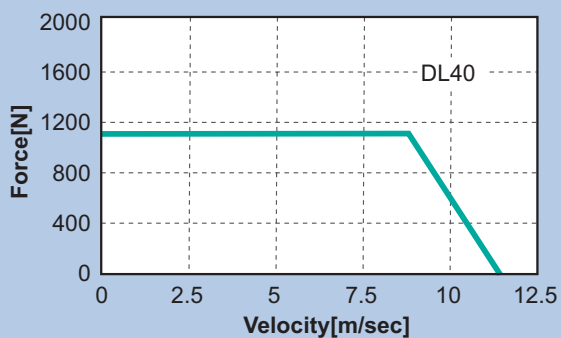
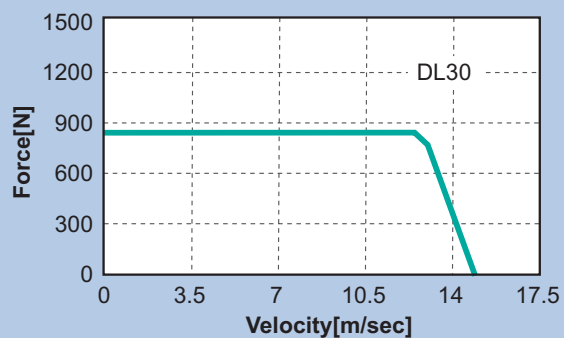
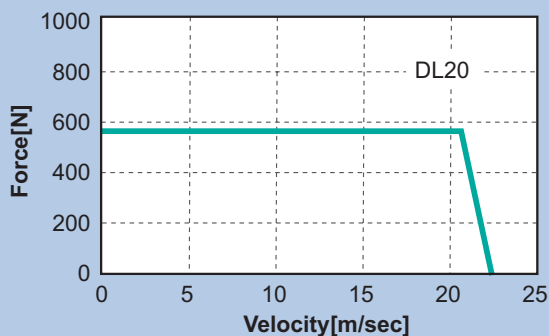


Performance Specifications

		Unit	SWL-DL20	SWL-DL30	SWL-DL40	SWL-DL50
Continuous	Force	N	188.5	282.7	377.0	471.2
	Current	Arms	10.2	10.2	10.2	10.2
Max.	Force	N	565.4	848.2	1130.9	1413.6
	Current	Arms	30.6	30.6	30.6	30.6
Force Constant(kf)		N/Arms	18.48	27.72	36.96	46.20
Back EMF Constant(Ke)		Vrms/(m/sec)	5.56	8.34	11.12	13.90
Electrical Time Constant(Te)		msec	1.18	1.20	1.21	1.21
Resistance(L to L)		Ω	0.92	1.36	1.80	2.24
Inductance(L to L)		mH	1.09	1.63	2.18	2.72
Mover Weight		kg	1.30	1.89	2.48	3.07

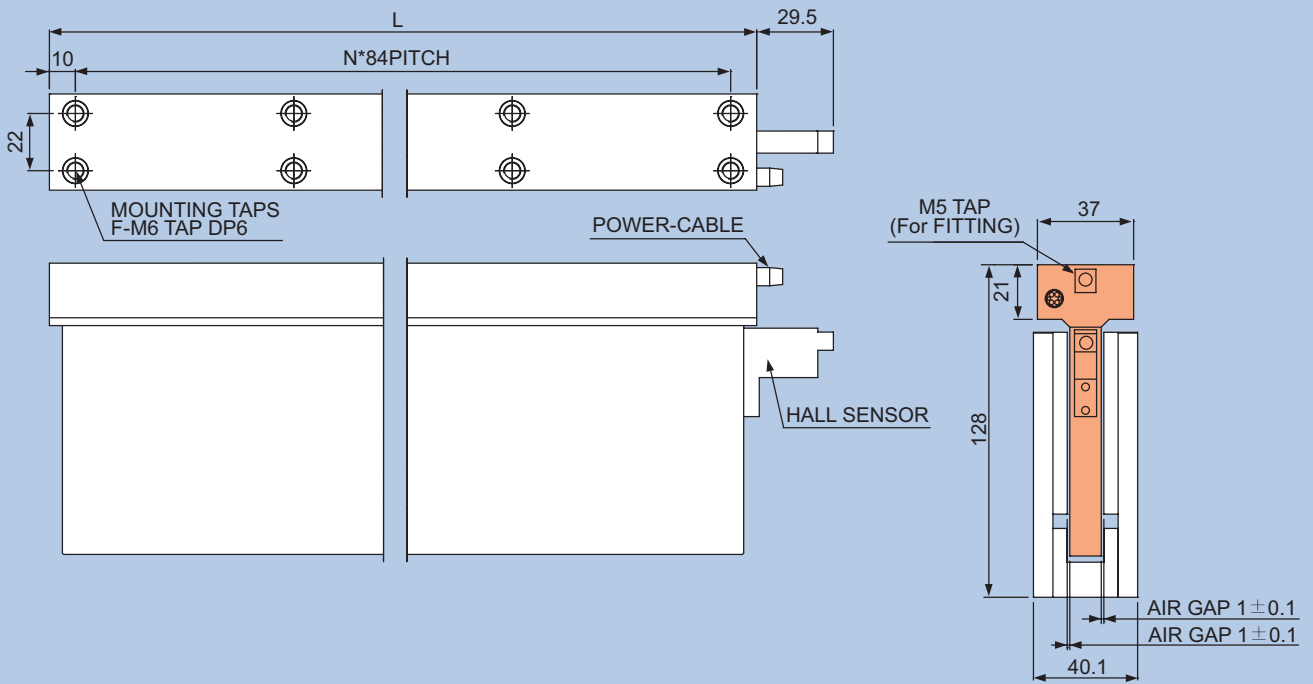
Magnet Pole pitch(N-N) : 42mm, Stator Weight : 18.6kg/m

FORCE VS. VELOCITY CHARACTERISTICS

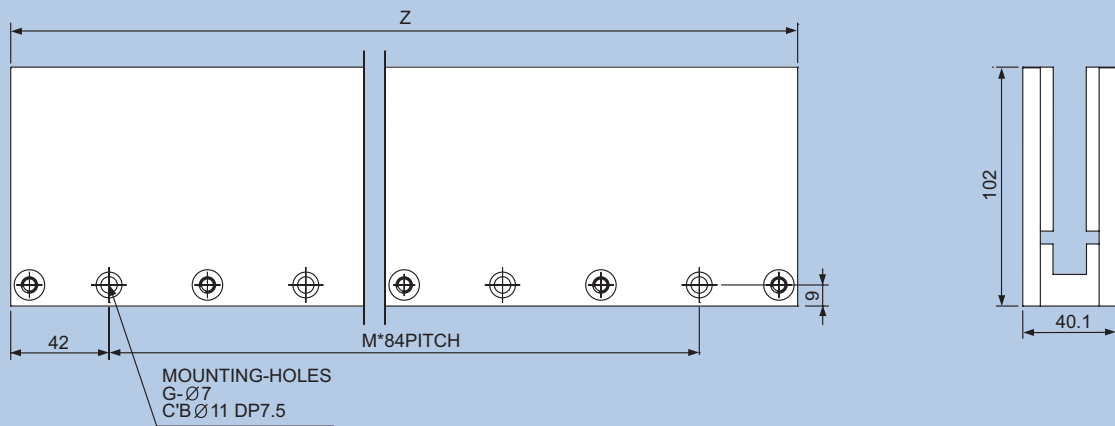


MECHANICAL DIMENSIONS

Mover Dimensions



Stator Dimensions



● Mover

Model SWL-DL	L	N	F
20	188	2	6
30	272	3	8
40	356	4	10
50	440	5	12

◆ Check the page 61 for cable and connector types

● Stator

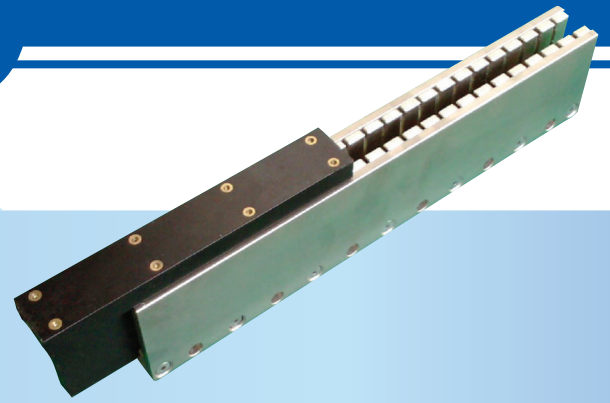
Model SWL-DL	Z	M	G
168	168	1	2
252	252	2	3
336	336	3	4
420	420	4	5
504	504	5	6
588	588	6	7

▶ The specifications above are subject to change for enhancement of product performance, Without any prior notice.

Coreless Linear Motor

BASIC SPECIFICATIONS

Rating Condition : Continuous
 Voltage Endurance : AC1500V, 1Min
 Operating Temperature : 0~40℃
 Coil Insulation Class : F Class (155℃)
 Hall Effect Device : Optional
 Air cooling available at no extra cost.
 Power Supply Requirement : Trapezoidal or Sinusoidal 3-phase Brushless Amplifier.

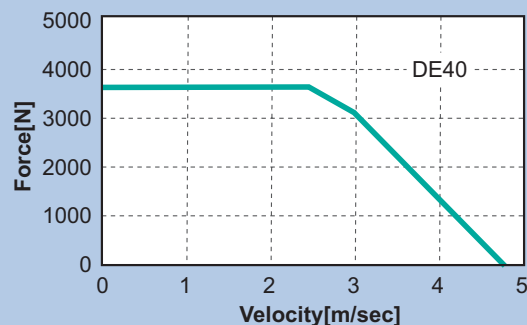
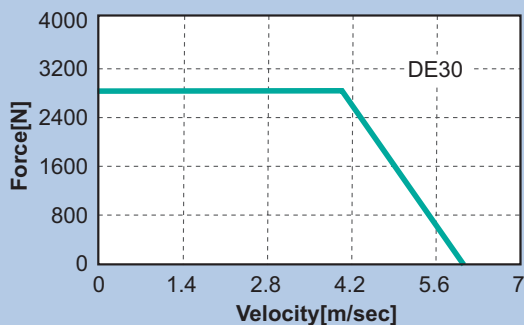
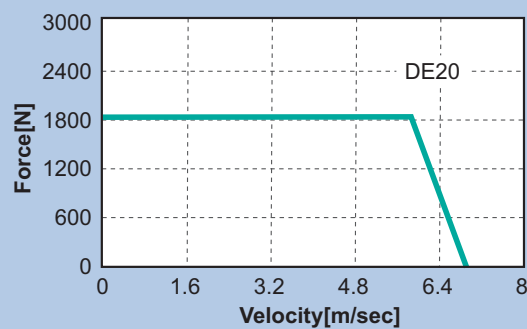
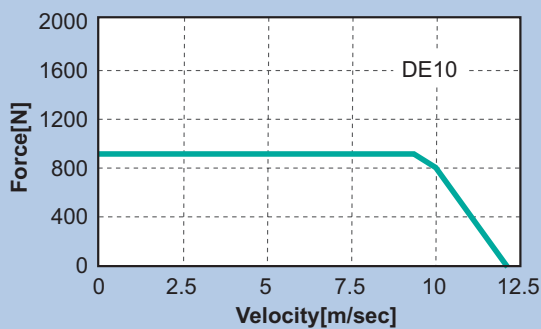


Performance Specifications

		Unit	SWL-DE10	SWL-DE20	SWL-DE30	SWL-DE40
Continuous	Force	N	300.9	610.9	902.8	1203.8
	Current	Arms	13.9	13.9	13.9	13.9
Max.	Force	N	902.8	1805.6	2708.5	3611.3
	Current	Arms	41.6	41.6	41.6	41.6
Force Constant(kf)		N/Arms	21.73	43.46	65.19	86.91
Back EMF Constant(Ke)		Vrms/(m/sec)	7.29	14.58	21.87	29.16
Electrical Time Constant(Te)		msec	2.54	2.54	2.54	2.54
Resistance(L to L)		Ω	0.52	1.05	1.57	2.09
Inductance(L to L)		mH	1.92	3.84	5.75	7.67
Mover Weight		kg	1.80	3.50	4.70	6.30

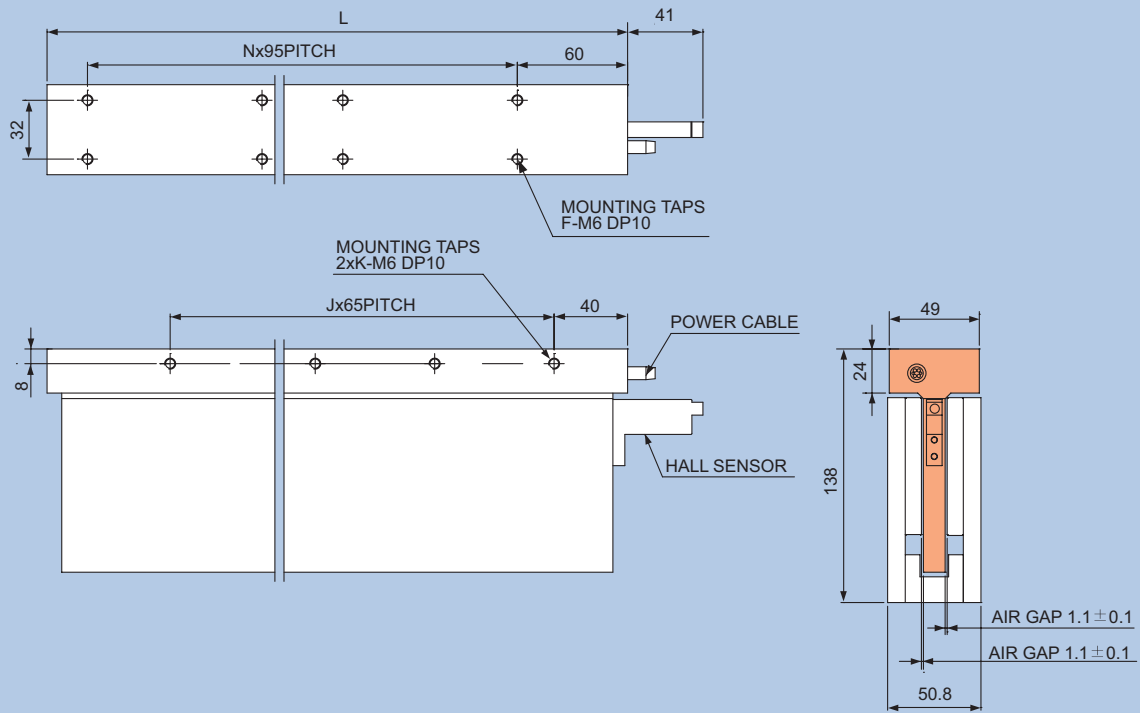
Magnet Pole pitch(N-N) : 84mm, Stator Weight : 29.2kg/m

FORCE VS. VELOCITY CHARACTERISTICS

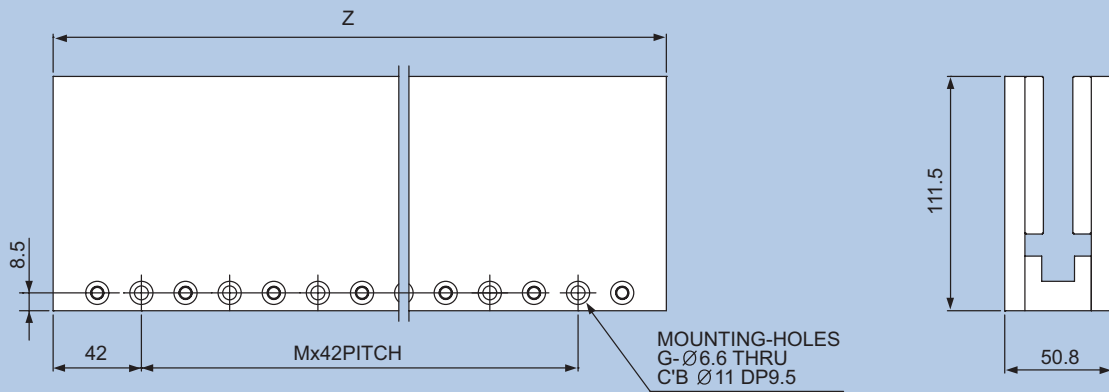


MECHANICAL DIMENSIONS

Mover Dimensions



Stator Dimensions



● Mover

Model SWL-DE	L	N	F	J	K
10	199	1	4	2	3
20	367	3	8	4	5
30	535	4	10	7	8
40	703	6	14	10	11

◆ Check the page 61 for cable and connector types

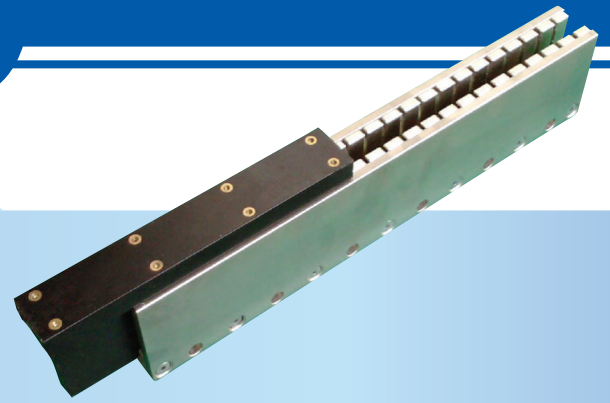
● Stator

Model SWL-DE	Z	M	G
168	168	2	3
252	252	4	5
336	336	6	7
420	420	8	9
504	504	10	11



The specifications above are subject to change for enhancement of product performance, Without any prior notice.

Coreless Linear Motor



BASIC SPECIFICATIONS

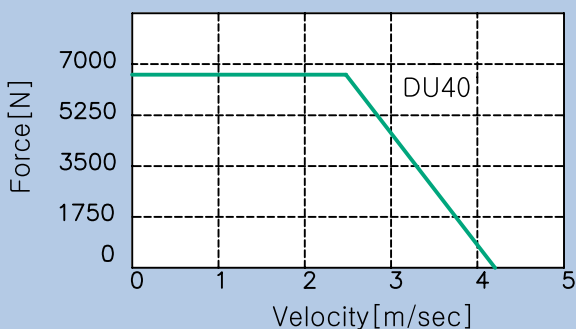
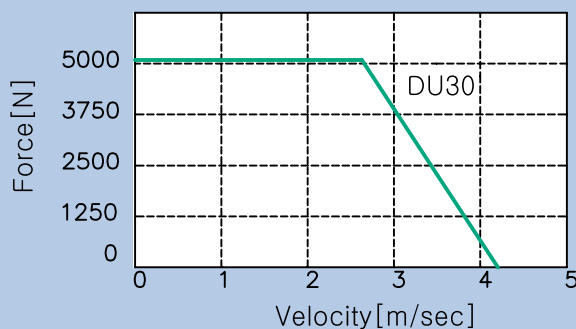
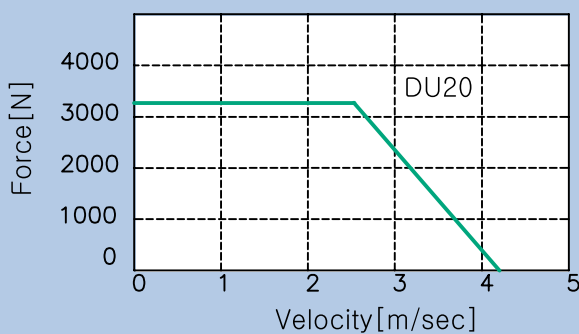
Rating Condition : Continuous
 Voltage Endurance : AC1500V, 1Min
 Operating Temperature : 0~40℃
 Coil Insulation Class : F Class (155℃)
 Hall Effect Device : Optional
 Air cooling available at no extra cost.
 Power Supply Requirement : Trapezoidal or Sinusoidal 3-phase Brushless Amplifier.

Performance Specifications

		Unit	SWL-DU20	SWL-DU30	SWL-DU40
Continuous	Force	N	1100	1650	2200
	Current	Arms	12.7	19.1	25.4
Max.	Force	N	3300	4950	6600
	Current	Arms	38	57	76
Force Constant(kf)		N/Arms	90.9	90.9	90.9
Back EMF Constant(Ke)		Vrms/(m/sec)	30.3	30.3	30.3
Electrical Time Constant(Te)		msec	0.3	0.2	0.15
Resistance(L to L)		Ω	2.4	1.6	1.2
Inductance(L to L)		mH	8.1	5.4	4.05
Mover Weight		kg	5.6	8.3	11

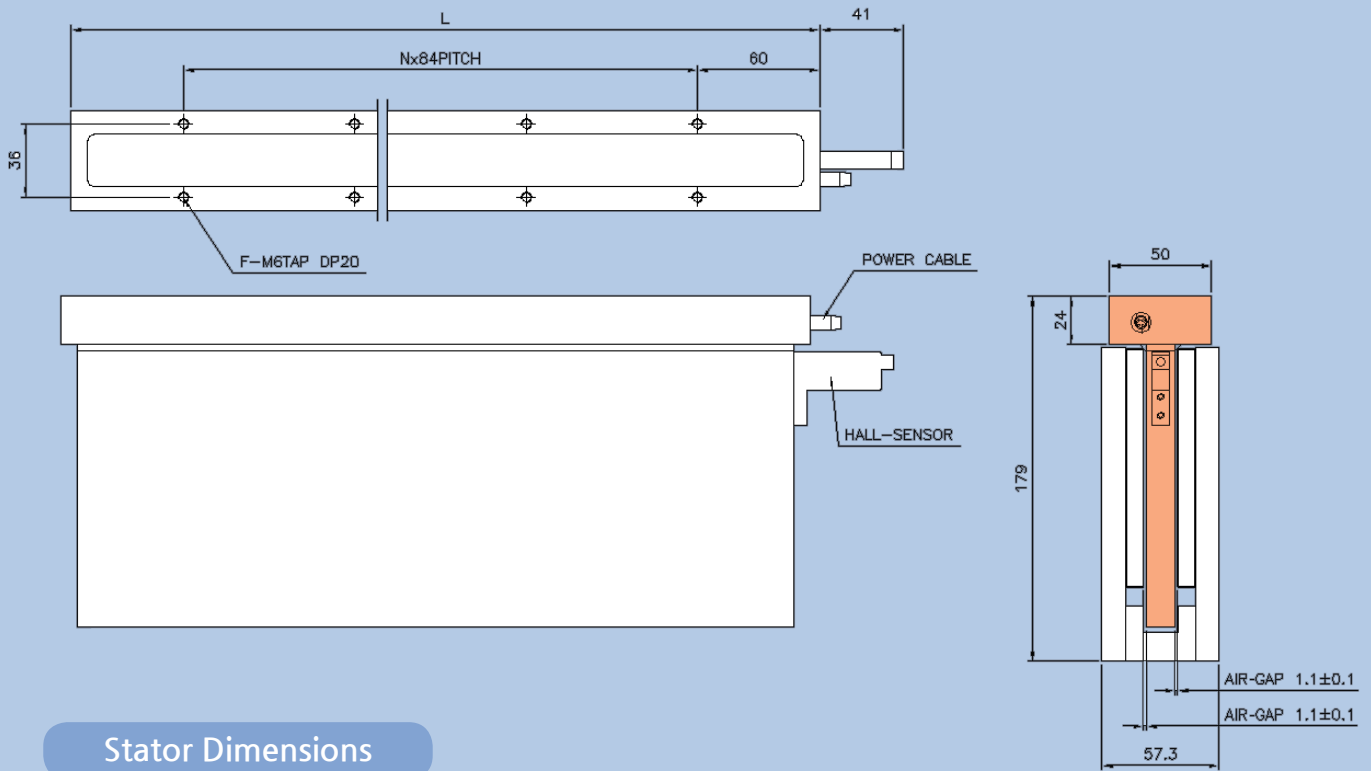
Magnet Pole pitch(N-N) : 84mm, Stator Weight : 46.3kg/m

FORCE VS. VELOCITY CHARACTERISTICS

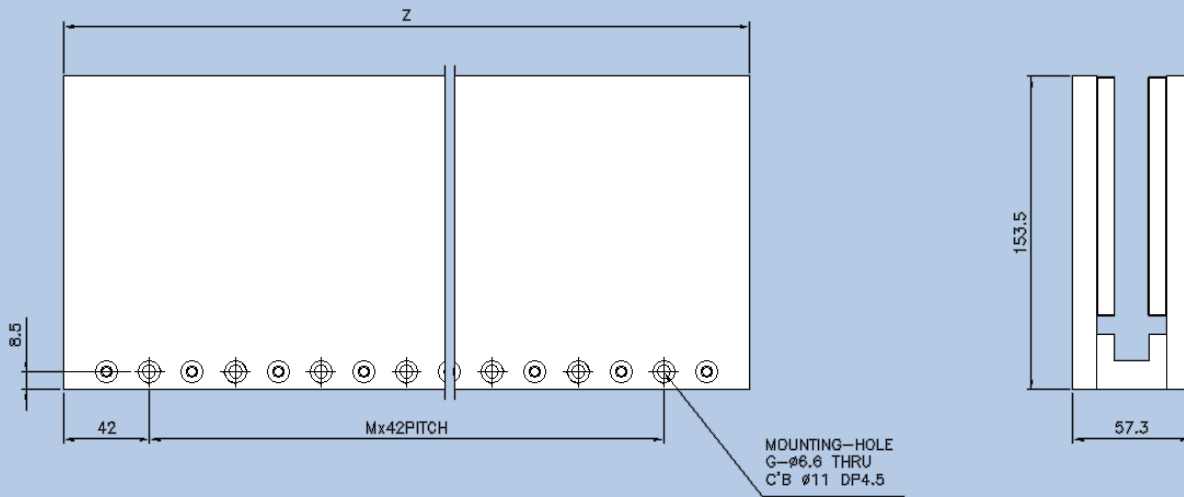


MECHANICAL DIMENSIONS

Mover Dimensions



Stator Dimensions



● Mover

Model SWL-DU	L	N	F
20	367	3	8
30	535	5	12
40	703	7	16

● Stator

Model SWL-DU	Z	M	G
252	252	4	5
336	336	6	7

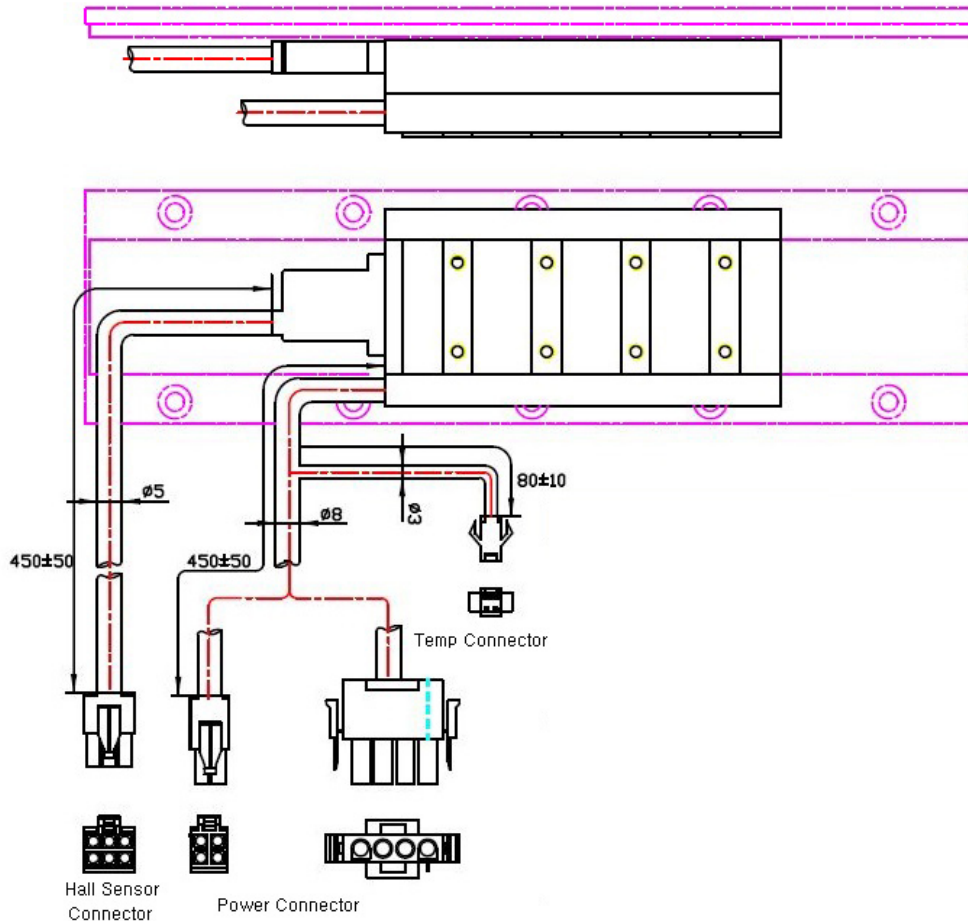
◆ Check the page 61 for cable and connector types





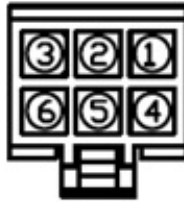

The specifications above are subject to change for enhancement of product performance, Without any prior notice.

Sewoo Linear Motor Over View

Iron Core Linear Motor Connectors

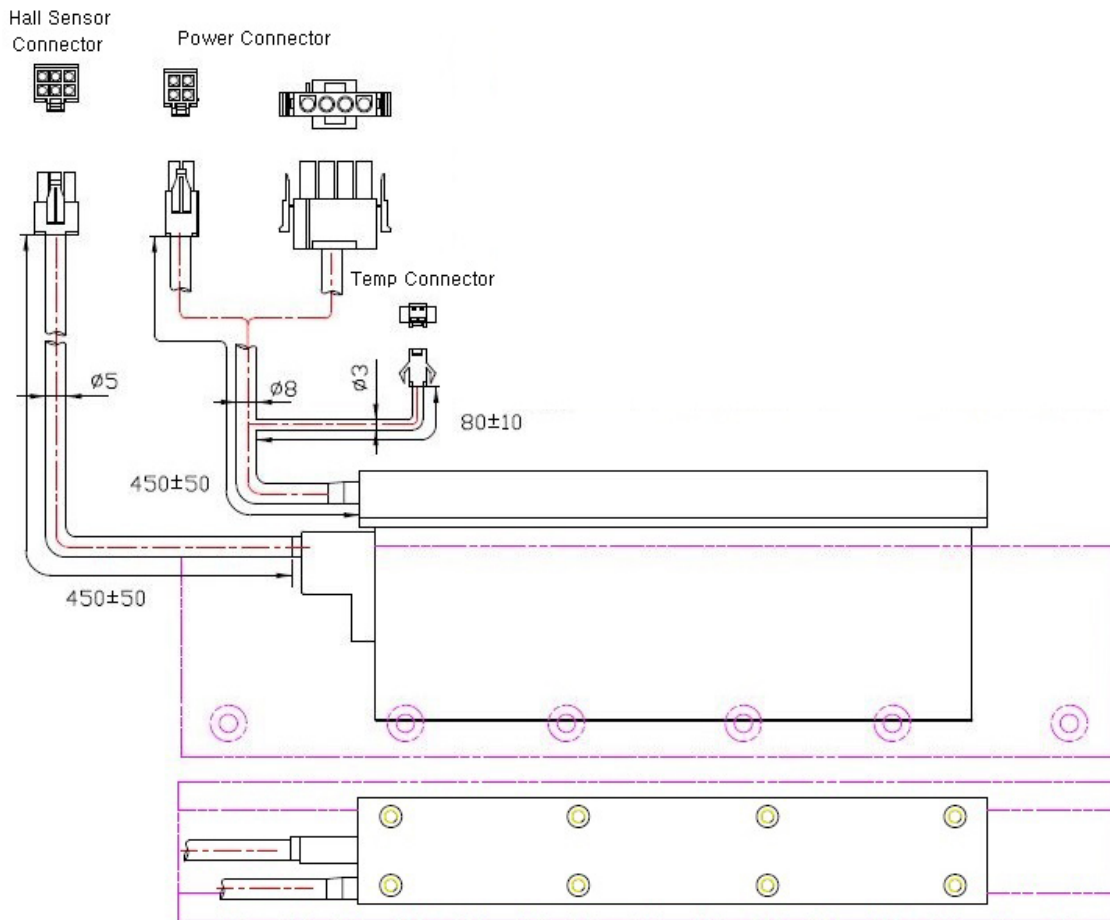




Power Connector		
ePL/ePE PL/PE 	Housing	AMP350779-1
	Pin	AMP350561-3
	1	U(Red)
	2	V(Yellow)
	3	W(Blue)
ePMI/ePS/ePM PMI/PS/PM 	Housing	AMP172167-1
	Pin	AMP170360-1
	1	U(Red)
	2	V(Yellow)
	3	W(Blue)
4	FG(Green)	

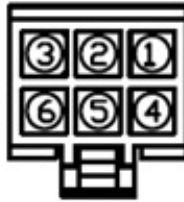

Hall Sensor & Temperature Connector		
	Housing	MOLEX5557D-06R
	Pin	MOLEX5556
	1	HA(Orange)
	2	HB(White)
	3	HC(Blue)
	4	5P(Red)
	5	5G(Black)
	6	SHILED
	Housing	JST SMP-02V
	Pin	JST SHF-011T-0.8
	1	TEMP(Black)
	2	TEMP(Black)

Sewoo Linear Motor Over View

Coreless Linear Motor Connectors



Power Connector		
DL / DE / DU20,30 DU40 	Housing	AMP350779-1
	Pin	AMP350561-3 AMP350922-6
	1	U(Red)
	2	V(Yellow)
	3	W(Blue)
DMI / DS / DM 	Housing	AMP172167-1
	Pin	AMP170360-1
	1	U(Red)
	2	V(Yellow)
	3	W(Blue)
4	FG(Green)	

Hall Sensor & Temperature Connector		
	Housing	MOLEX5557D-06R
	Pin	MOLEX5556
	1	HA(Orange)
	2	HB(White)
	3	HC(Blue)
	4	5P(Red)
	5	5G(Black)
	6	SHILED
	Housing	JST SMP-02V
	Pin	JST SHF-011T-0.8
	1	TEMP(Black)
	2	TEMP(Black)